

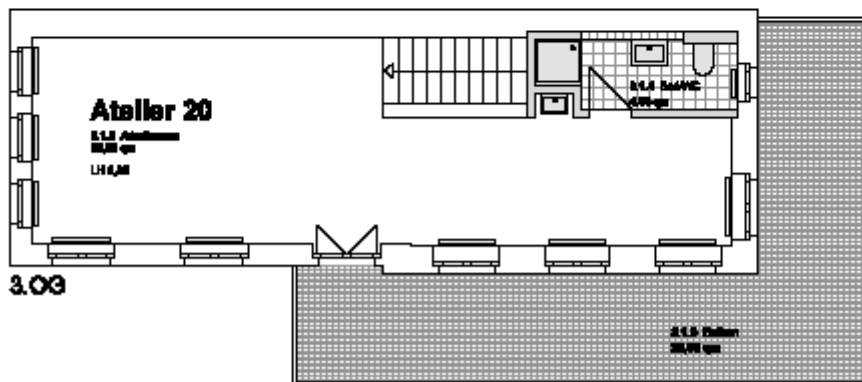
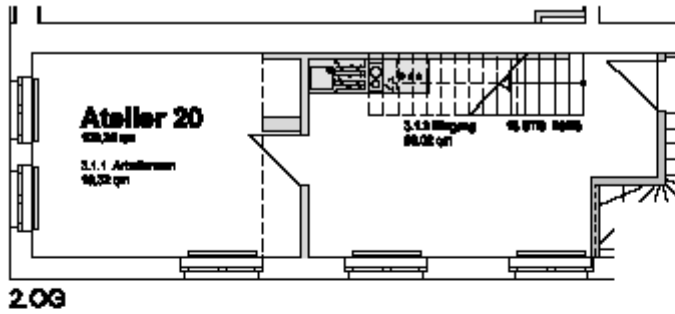
studio 20:

location:	tower – 2 Etagen	
spatial concept:	two floors	
furnishing:	<ul style="list-style-type: none"> - floors: <li style="padding-left: 20px;">entrance level: <li style="padding-left: 40px;">aspahlt floor covered with light grey linoleum; - walls, ceiling: painted white. - sanitary arrangements: bathroom with shower tray and hand washbasin; one-handle tap, tiled up to the height of the doors - heating system: central heating with radiators - Pantry with sink and vanity unit and two hotplates - Worktop with a sink - electrical installation with divers possibilities of connections for light or supply of inhouse data lines - door opener with interphone 	
floor space:	82,70	m ²

Lettig management:

Kathrin Ruffer - GSE gGmbH – Gesellschaft für StadtEntwicklung - Prinzenallee 74, 13357 Berlin
 Phone +49 (30) 318 7 318 - 12 - E-Mail: rueffer@gseggmbh.de - <http://www.atelierhaus79.de>

floor plan:



Lettig management:

Kathrin Ruffer - GSE gGmbH – Gesellschaft für Stadtentwicklung - Prinzenallee 74, 13357 Berlin
Phone +49 (30) 318 7 318 - 12 - E-Mail: rueffer@gseggmbh.de - <http://www.atelierhaus79.de>