

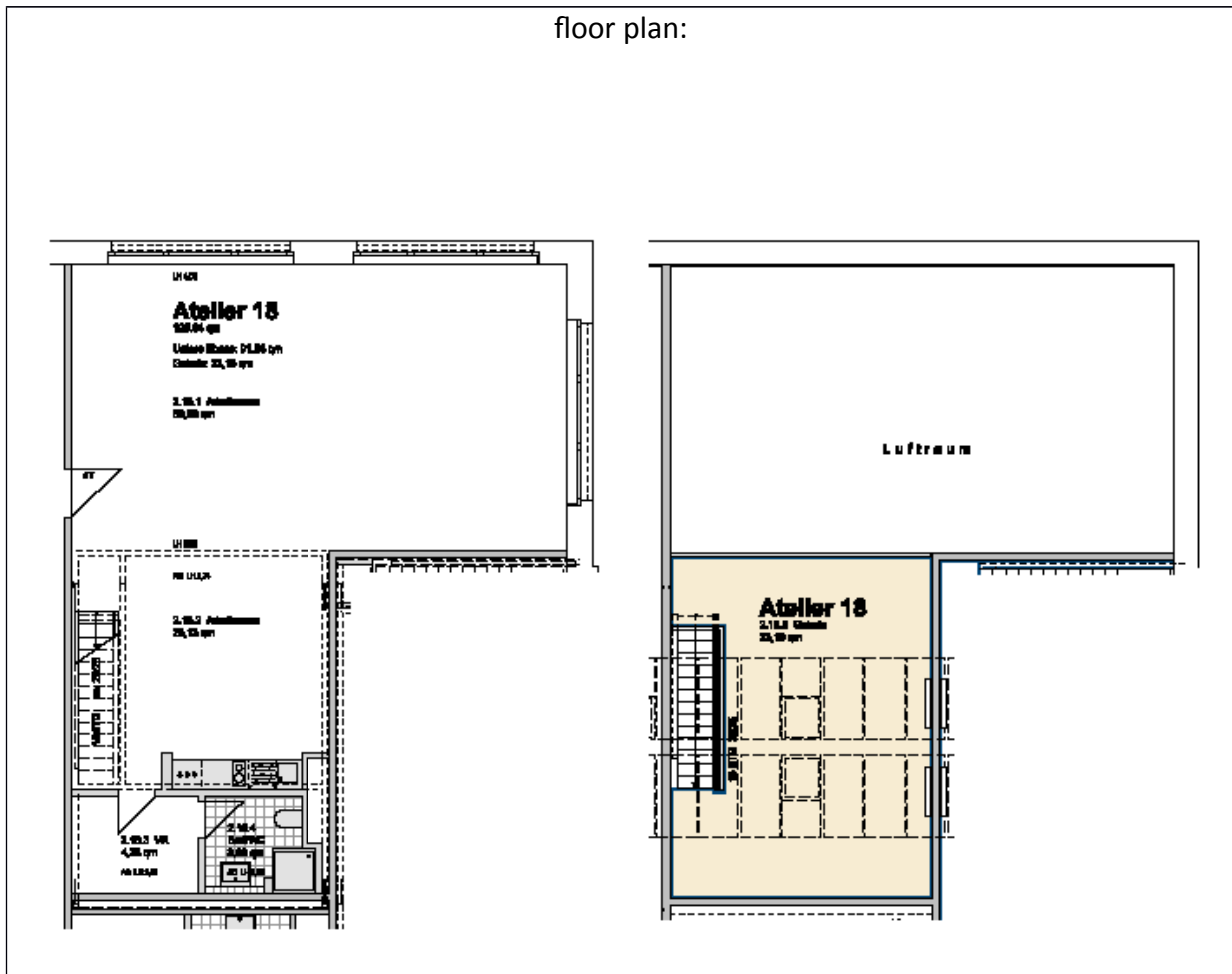
studio 18:

location:	first floor– see first floor plan in the addendum	
spatial concept:	according to the floor plan	
furnishing:	<ul style="list-style-type: none"> - facade : <ul style="list-style-type: none"> entrance level: big upright metal windows ridge: <ul style="list-style-type: none"> glass-skylight including ventilation flap and roller blinds - floors: <ul style="list-style-type: none"> entrance level: <ul style="list-style-type: none"> cement floor coated light grey; gallery level: <ul style="list-style-type: none"> wooden material worktop in its natural state, sealed. - walls, ceiling: painted white. - sanitary arrangements: bathroom with shower tray and hand washbasin; one-handle tap, tiled up to the height of the doors - heating system: floorheating entrance level; central heating with radiators on the gallery level - Pantry with sink and vanity unit and two hotplates - Worktop with a sink - electrical installation with divers possibilities of connections for light or supply of inhouse data lines - door opener with interphone <p style="margin-left: 20px;">floor space lower level: 91,88 m²</p> <p style="margin-left: 20px;">floor space gallery: 33,16 m²</p>	
floor space:	125,04	m ²

Lettig management:

Kathrin Ruffer - GSE gGmbH – Gesellschaft für StadtEntwicklung - Prinzenallee 74, 13357 Berlin
Phone +49 (30) 318 7 318 - 12 - E-Mail: rueffer@gseggmbh.de - <http://www.atelierhaus79.de>

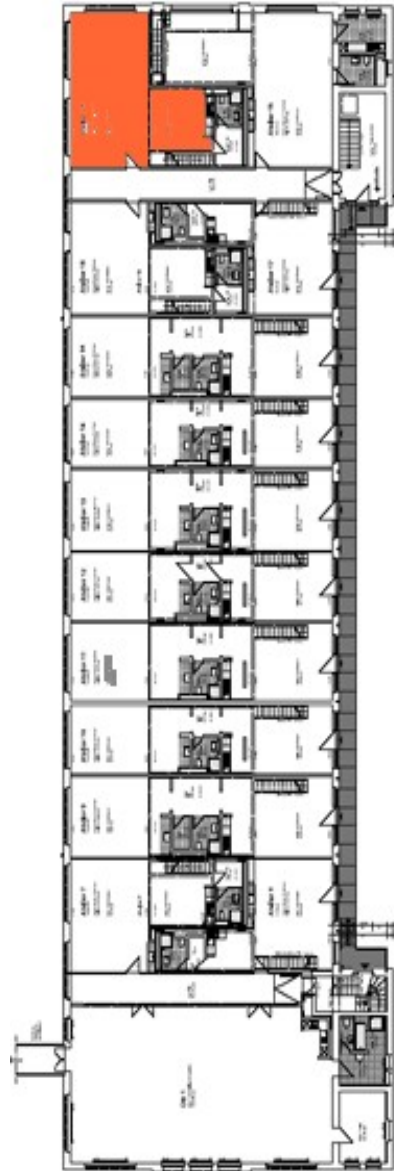
floor plan:



Lettig management:

Kathrin Ruffer - GSE gGmbH – Gesellschaft für StadtEntwicklung - Prinzenallee 74, 13357 Berlin
Phone +49 (30) 318 7 318 - 12 - E-Mail: rueffer@gseggmbh.de - <http://www.atelierhaus79.de>

floor plan: first floor with the position of the studio



Lettig management:

Kathrin Ruffer - GSE gGmbH – Gesellschaft für StadtEntwicklung - Prinzenallee 74, 13357 Berlin
Phone +49 (30) 318 7 318 - 12 - E-Mail: rueffer@gseggmbh.de - <http://www.atelierhaus79.de>