

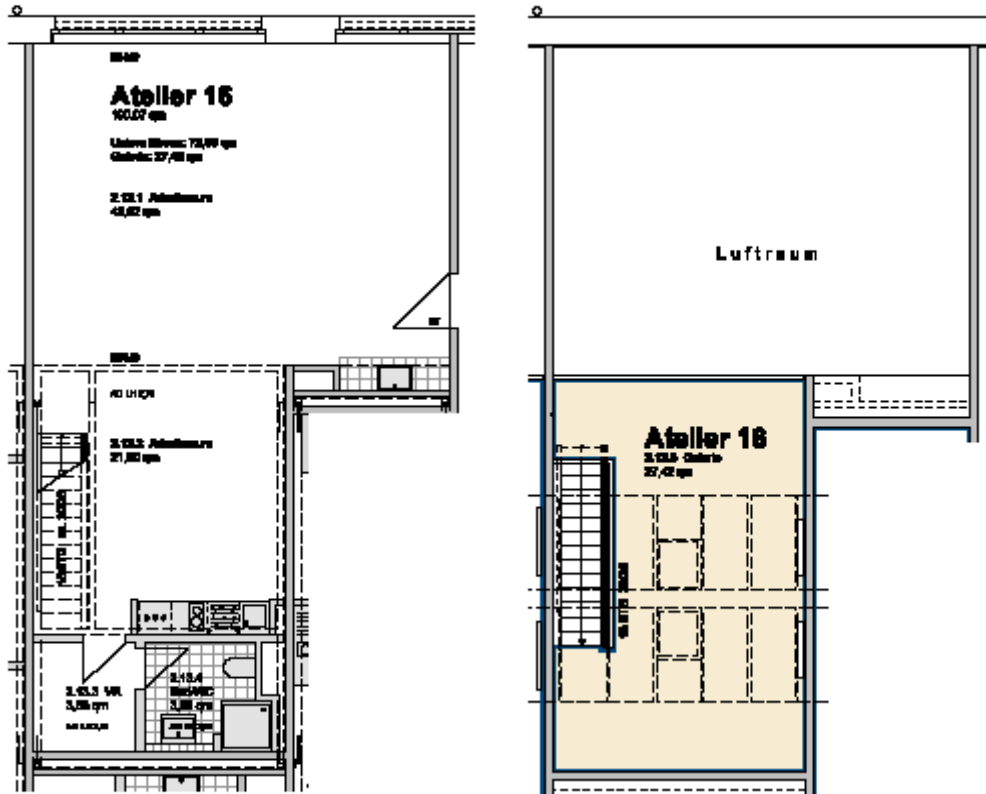
**studio 16:**

location:	first floor– see first floor plan in the addendum	
spatial concept:	according to the floor plan	
furnishing:	<ul style="list-style-type: none"> <li>- facade :  <ul style="list-style-type: none"> <li>entrance level: big upright metal windows</li> <li>ridge:  <ul style="list-style-type: none"> <li>glass-skylight including ventilation flap and roller blinds</li> </ul> </li> </ul> </li> <li>- floors:  <ul style="list-style-type: none"> <li>entrance level:  <ul style="list-style-type: none"> <li>cement floor coated light grey;</li> </ul> </li> <li>gallery level:  <ul style="list-style-type: none"> <li>wooden material worktop in its natural state, sealed.</li> </ul> </li> </ul> </li> <li>- walls, ceiling: painted white.</li> <li>- sanitary arrangements: bathroom with shower tray and hand washbasin; one-handle tap, tiled up to the height of the doors</li> <li>- heating system: floorheating entrance level; central heating with radiators on the gallery level</li> <li>- Pantry with sink and vanity unit and two hotplates</li> <li>- Worktop with a sink</li> <li>- electrical installation with divers possibilities of connections for light or supply of inhouse data lines</li> <li>- door opener with interphone</li> </ul> <p style="margin-left: 20px;">floor space lower level:                      72,65 m<sup>2</sup>  floor space gallery:                                27,42 m<sup>2</sup></p>	
floor space:	100,07	m <sup>2</sup>

**Lettig management:**

Kathrin Ruffer - GSE gGmbH – Gesellschaft für StadtEntwicklung - Prinzenallee 74, 13357 Berlin  
Phone +49 (30) 318 7 318 - 12 - E-Mail: [rueffer@gseggmbh.de](mailto:rueffer@gseggmbh.de) - <http://www.atelierhaus79.de>

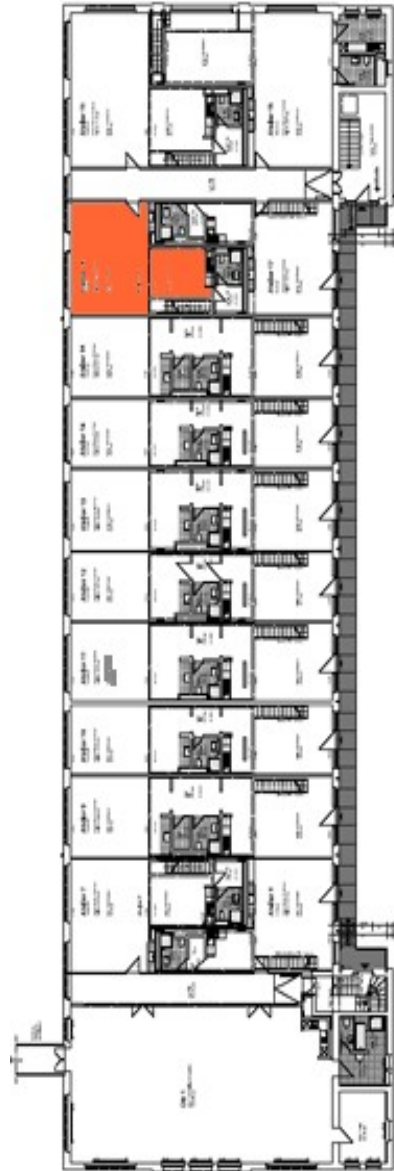
floor plan:



**Lettig management:**

Kathrin Ruffer - GSE gGmbH – Gesellschaft für StadtEntwicklung - Prinzenallee 74, 13357 Berlin  
Phone +49 (30) 318 7 318 - 12 - E-Mail: [rueffer@gseggmbh.de](mailto:rueffer@gseggmbh.de) - <http://www.atelierhaus79.de>

floor plan: first floor with the position of the studio



**Lettig management:**

Kathrin Ruffer - GSE gGmbH – Gesellschaft für StadtEntwicklung - Prinzenallee 74, 13357 Berlin  
Phone +49 (30) 318 7 318 - 12 - E-Mail: [rueffer@gseggmbh.de](mailto:rueffer@gseggmbh.de) - <http://www.atelierhaus79.de>