

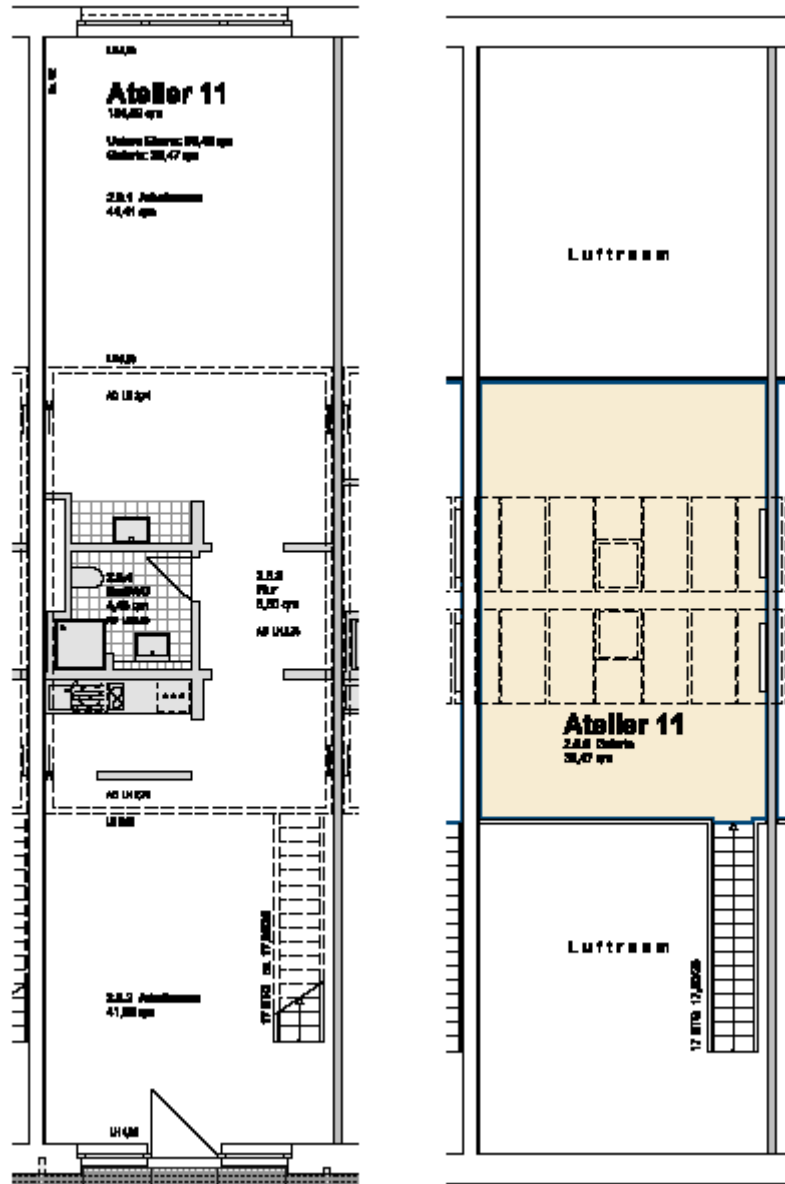
studio 11:

| | | |
|------------------|--|----------------|
| location: | first floor– see first floor plan in the addendum | |
| spatial concept: | according to the floor plan | |
| furnishing: | <ul style="list-style-type: none"> - facade : entrance level: big upright metal windows ridge: glass-skylight including ventilation flap and roller blinds - floors: entrance level: cement floor coated light grey; gallery level: wooden material worktop in its natural state, sealed. - walls, ceiling: painted white. - sanitary arrangements: bathroom with shower tray and hand washbasin; one-handle tap, tiled up to the height of the doors - heating system: floorheating entrance level; central heating with radiators on the gallery level - Pantry with sink and vanity unit and two hotplates - Worktop with a sink - electrical installation with divers possibilities of connections for light or supply of inhouse data lines - door opener with interphone <p> floor space lower level: 95,42 m² floor space gallery: 39,47 m² </p> | |
| floor space: | 134,89 | m ² |

Lettig management:

Kathrin Ruffer - GSE gGmbH – Gesellschaft für StadtEntwicklung - Prinzenallee 74, 13357 Berlin
 Phone +49 (30) 318 7 318 - 12 - E-Mail: rueffer@gseggmbh.de - <http://www.atelierhaus79.de>

floor plan:



Lettig management:

Kathrin Ruffer - GSE gGmbH – Gesellschaft für StadtEntwicklung - Prinzenallee 74, 13357 Berlin
Phone +49 (30) 318 7 318 - 12 - E-Mail: rueffer@gseggmbh.de - <http://www.atelierhaus79.de>

floor plan: first floor with the position of the studio



Lettig management:

Kathrin Ruffer - GSE gGmbH – Gesellschaft für StadtEntwicklung - Prinzenallee 74, 13357 Berlin
Phone +49 (30) 318 7 318 - 12 - E-Mail: rueffer@gseggmbh.de - <http://www.atelierhaus79.de>