

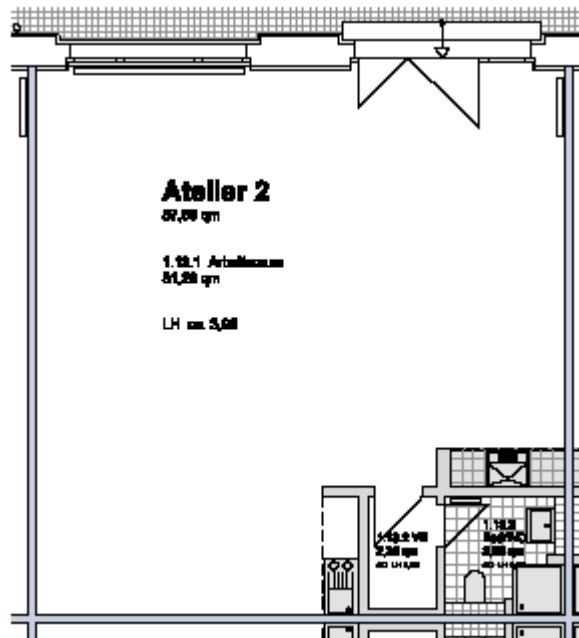
studio 2:

location:	Ground floor– see ground floor plan in the addendum	
spatial concept:	According to the floor plan	
furnishing:	<ul style="list-style-type: none"> - facade : big upright metal windows - floors: cement floor coated light grey - walls, ceiling: painted white - sanitary arrangements: bathroom with shower tray and hand washbasin; one-handle tap, tiled up to the height of the doors - heating system: central heating with radiators - Pantry with sink and vanity unit - Worktop with a sink - electrical installation with divers possibilities of connections for light or supply of inhouse data lines 	
floor space:	87,58	m ²

Lettig management:

Kathrin Ruffer - GSE gGmbH – Gesellschaft für StadtEntwicklung - Prinzenallee 74, 13357 Berlin
 Phone +49 (30) 318 7 318 - 12 - E-Mail: rueffer@gseggmbh.de - <http://www.atelierhaus79.de>

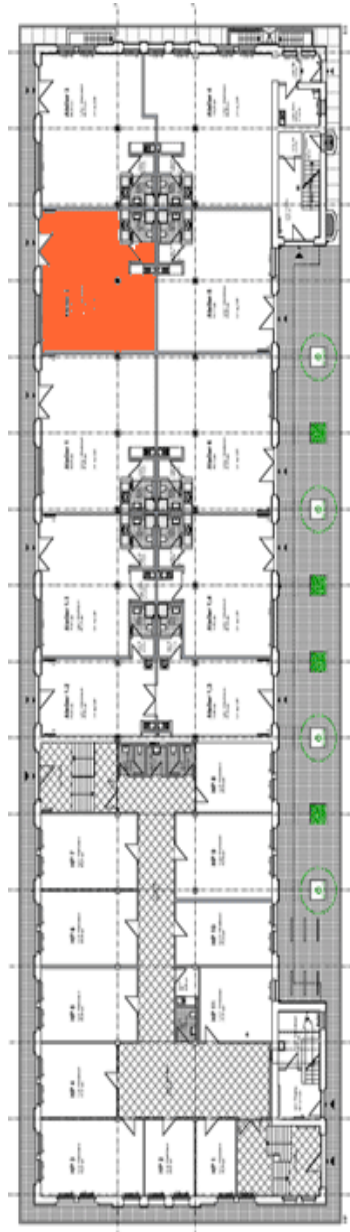
floor plan:



Lettig management:

Kathrin Ruffer - GSE gGmbH – Gesellschaft für StadtEntwicklung - Prinzenallee 74, 13357 Berlin
Phone +49 (30) 318 7 318 - 12 - E-Mail: rueffer@gseggmbh.de - <http://www.atelierhaus79.de>

floor plan: first floor with the position of the studio



Lettig management:

Kathrin Ruffer - GSE gGmbH – Gesellschaft für StadtEntwicklung - Prinzenallee 74, 13357 Berlin
Phone +49 (30) 318 7 318 - 12 - E-Mail: rueffer@gseggmbh.de - <http://www.atelierhaus79.de>