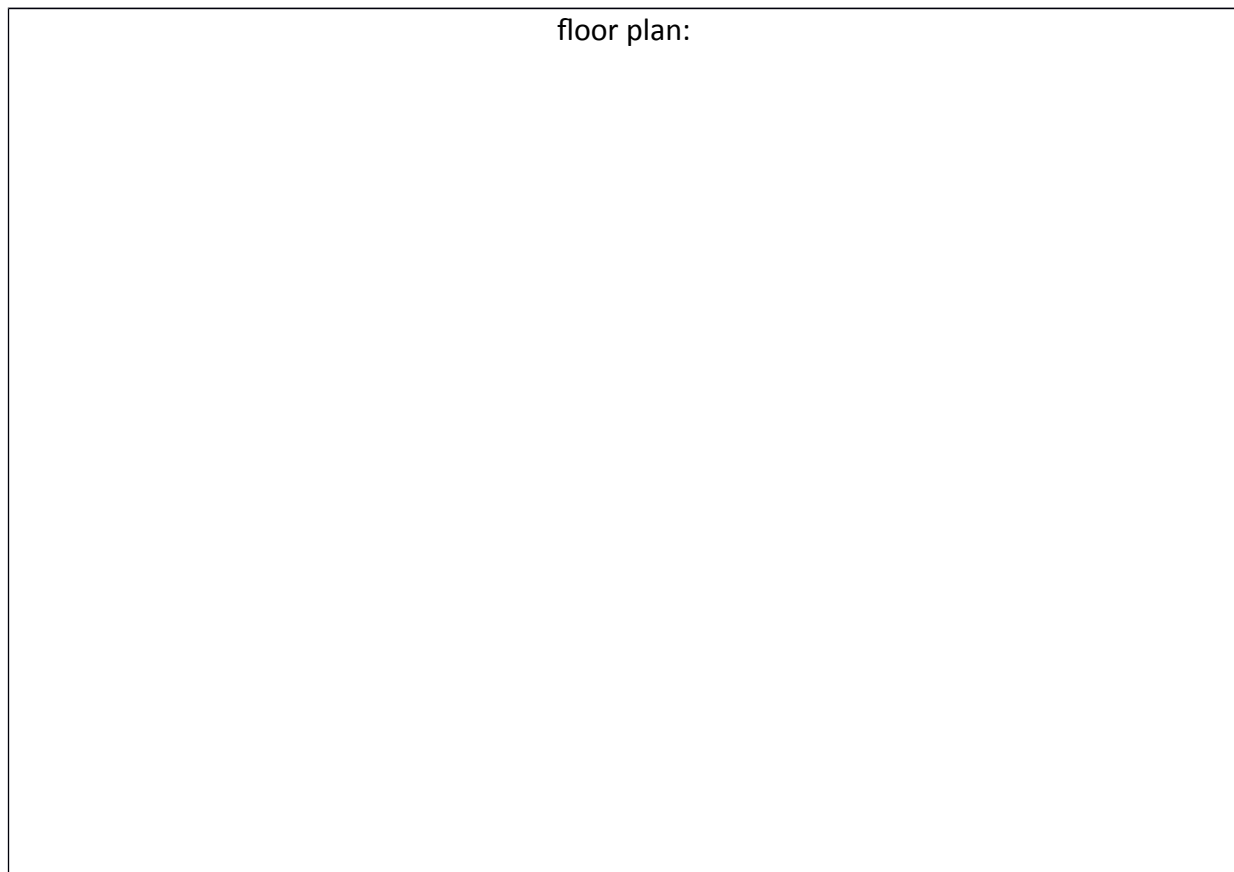


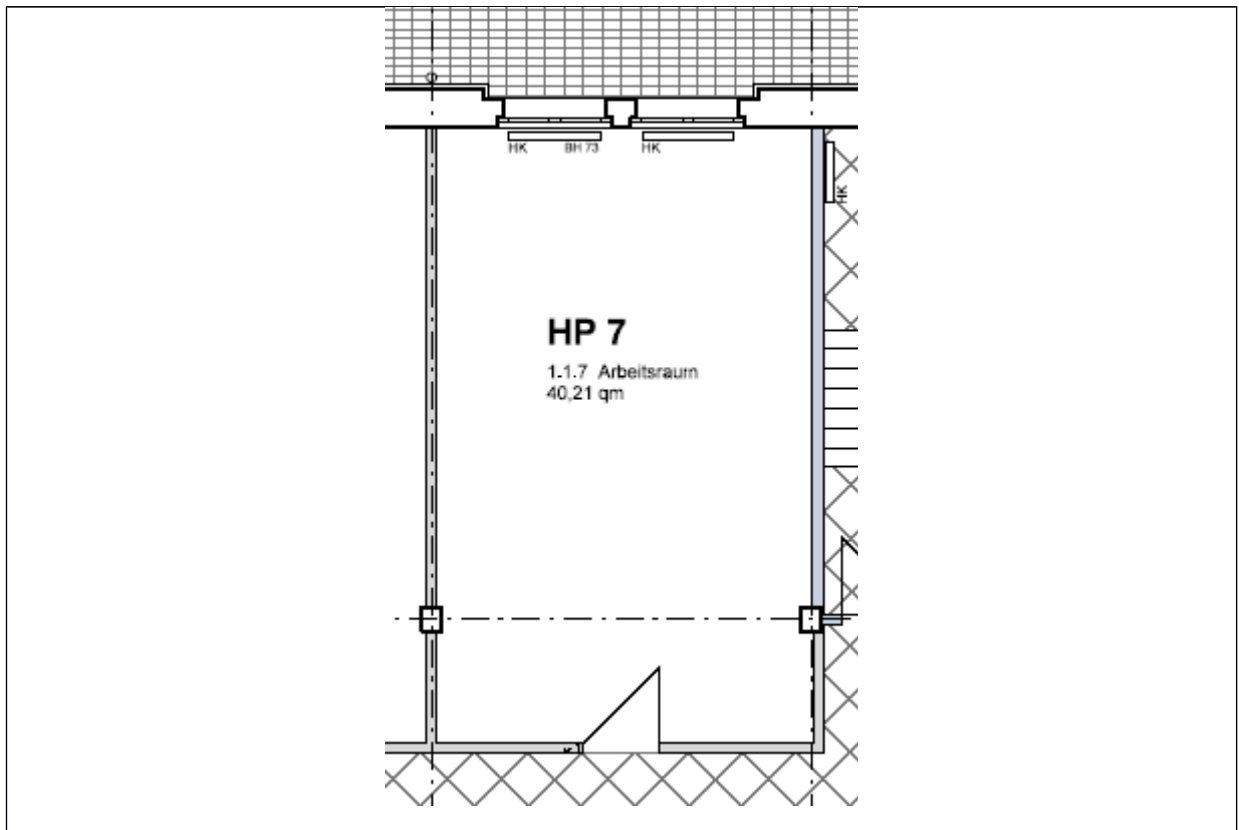
## Studio 1.1.7:

location:	Ground floor– see ground floor plan in the addendum	
spatial concept:	According to the floor plan Single room with shared WC and pantry	
furnishing:	<ul style="list-style-type: none"> <li>- height: 2,7 m</li> <li>- facade : big upright metal windows, space: ca. 2,5 m<sup>2</sup></li> <li>- floors: cement floor coated light grey</li> <li>- walls, ceiling: painted white</li> <li>- sanitary arrangements: shared facilities</li> <li>- heating system: central heating with radiators</li> <li>- no water facility inside the studios, worktop with a sink in a shared room</li> <li>- electrical installation</li> </ul>	
floor space:	40,58	m <sup>2</sup>



### Lettig management:

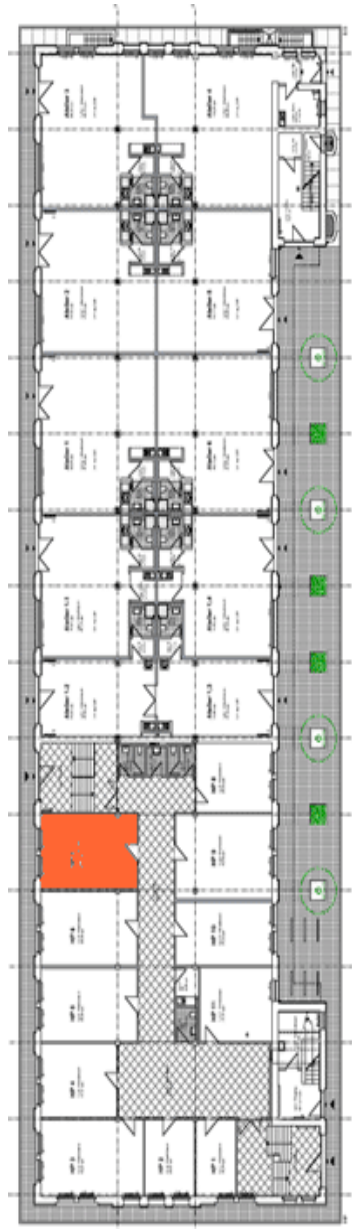
Kathrin Ruffer - GSE gGmbH – Gesellschaft für StadtEntwicklung - Prinzenallee 74, 13357 Berlin  
 Phone +49 (30) 318 7 318 - 12 - E-Mail: [rueffer@gseggmbh.de](mailto:rueffer@gseggmbh.de) - <http://www.atelierhaus79.de>



**Lettig management:**

Kathrin Ruffer - GSE gGmbH – Gesellschaft für StadtEntwicklung - Prinzenallee 74, 13357 Berlin  
Phone +49 (30) 318 7 318 - 12 - E-Mail: [rueffer@gseggmbh.de](mailto:rueffer@gseggmbh.de) - <http://www.atelierhaus79.de>

floor plan: ground floor with the position of the studio



**Lettig management:**

Kathrin Ruffer - GSE gGmbH – Gesellschaft für StadtEntwicklung - Prinzenallee 74, 13357 Berlin  
Phone +49 (30) 318 7 318 - 12 - E-Mail: [rueffer@gseggmbh.de](mailto:rueffer@gseggmbh.de) - <http://www.atelierhaus79.de>