

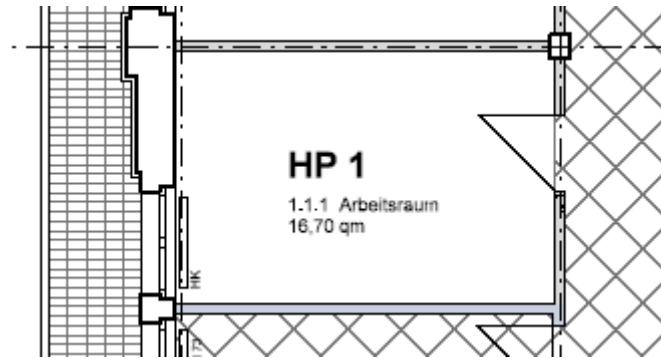
Studio 1.1.1:

location:	Ground floor– see ground floor plan in the addendum	
spatial concept:	According to the floor plan Single room with shared WC and pantry	
furnishing:	<ul style="list-style-type: none"> - height: 2,7 m - facade : big upright metal windows, space: ca. 2,5 m² - floors: cement floor coated light grey - walls, ceiling: painted white - sanitary arrangements: shared facilities - heating system: central heating with radiators - no water facility inside the studios, worktop with a sink in a shared room - electrical installation 	
floor space:	16,51	m ²

Lettig management:

Kathrin Ruffer - GSE gGmbH – Gesellschaft für StadtEntwicklung - Prinzenallee 74, 13357 Berlin
 Phone +49 (30) 318 7 318 - 12 - E-Mail: rueffer@gseggmbh.de - <http://www.atelierhaus79.de>

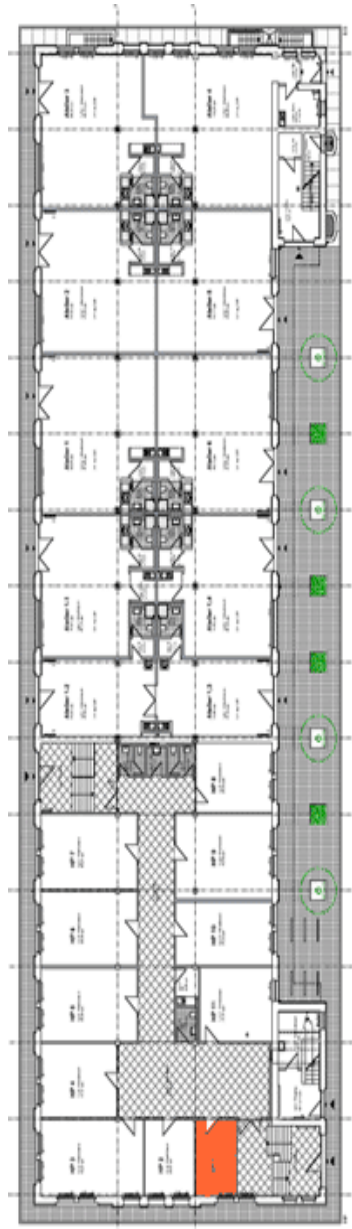
floor plan:



Lettig management:

Kathrin Ruffer - GSE gGmbH – Gesellschaft für StadtEntwicklung - Prinzenallee 74, 13357 Berlin
Phone +49 (30) 318 7 318 - 12 - E-Mail: rueffer@gseggmbh.de - <http://www.atelierhaus79.de>

floor plan: ground floor with the position of the studio



Lettig management:

Kathrin Ruffer - GSE gGmbH – Gesellschaft für StadtEntwicklung - Prinzenallee 74, 13357 Berlin
Phone +49 (30) 318 7 318 - 12 - E-Mail: rueffer@gseggmbh.de - <http://www.atelierhaus79.de>