

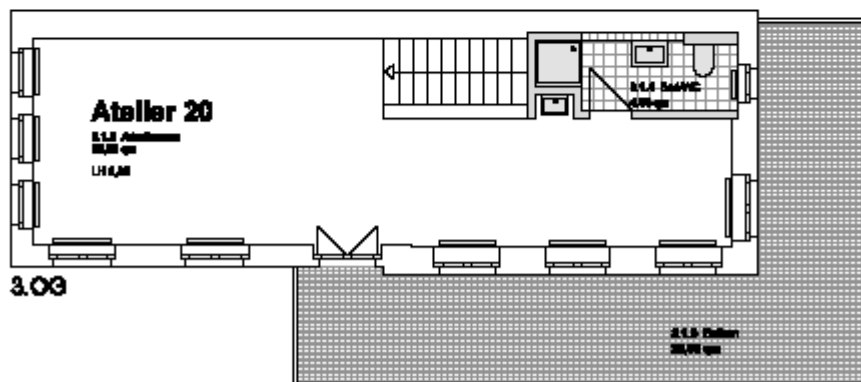
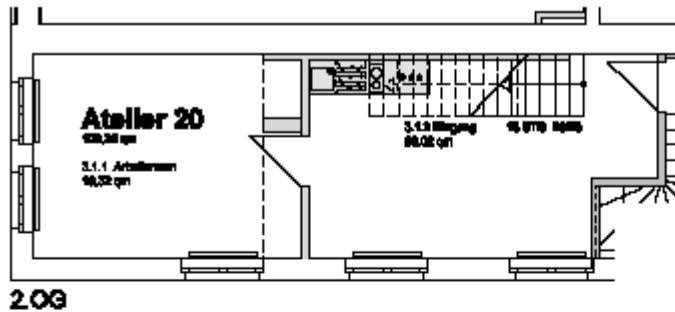
**studio 20:**

location:	tower – 2 Etagen		
spatial concept:	two floors		
furnishing:	<ul style="list-style-type: none"> <li>- floors:</li> <li>  entrance level:               <ul style="list-style-type: none"> <li>asphalt floor covered with light grey linoleum;</li> </ul> </li> <li>- walls, ceiling: painted white.</li> <li>- sanitary arrangements: bathroom with shower tray and hand washbasin; one-handle tap, tiled up to the height of the doors</li> <li>- heating system: central heating with radiators</li> <li>- Pantry with sink and vanity unit and two hotplates</li> <li>- Worktop with a sink</li> <li>- electrical installation with divers possibilities of connections for light or supply of inhouse data lines</li> <li>- door opener with interphone</li> </ul>		
floor space:		82,70	m <sup>2</sup>
rent net cold:	(7,70 € / m <sup>2</sup> )	588,20	€ / month
prepayment of additional costs:	(1,10 € / m <sup>2</sup> )	84,03	€ / month
prepayment of heating:	(0,80 € / m <sup>2</sup> )	61,11	€ / month
terrace:	surcharge	30,00	€ / month
total rent:		763,34	€ / month

**Letting management:**

Kathrin Rüffer - GSE gGmbH – Gesellschaft für StadtEntwicklung- Prinzenallee 74, 13357 Berlin  
 Phone +49 (30) 49 30 63 12 - E-Mail: [rueffer@gseggmbh.de](mailto:rueffer@gseggmbh.de) - <http://www.atelierhaus79.de>

floor plan:



**Letting management:**

Kathrin Rüffer - GSE gGmbH – Gesellschaft für StadtEntwicklung- Prinzenallee 74, 13357 Berlin  
Phone +49 (30) 49 30 63 12 - E-Mail: [rueffer@gseggmbh.de](mailto:rueffer@gseggmbh.de) - <http://www.atelierhaus79.de>