

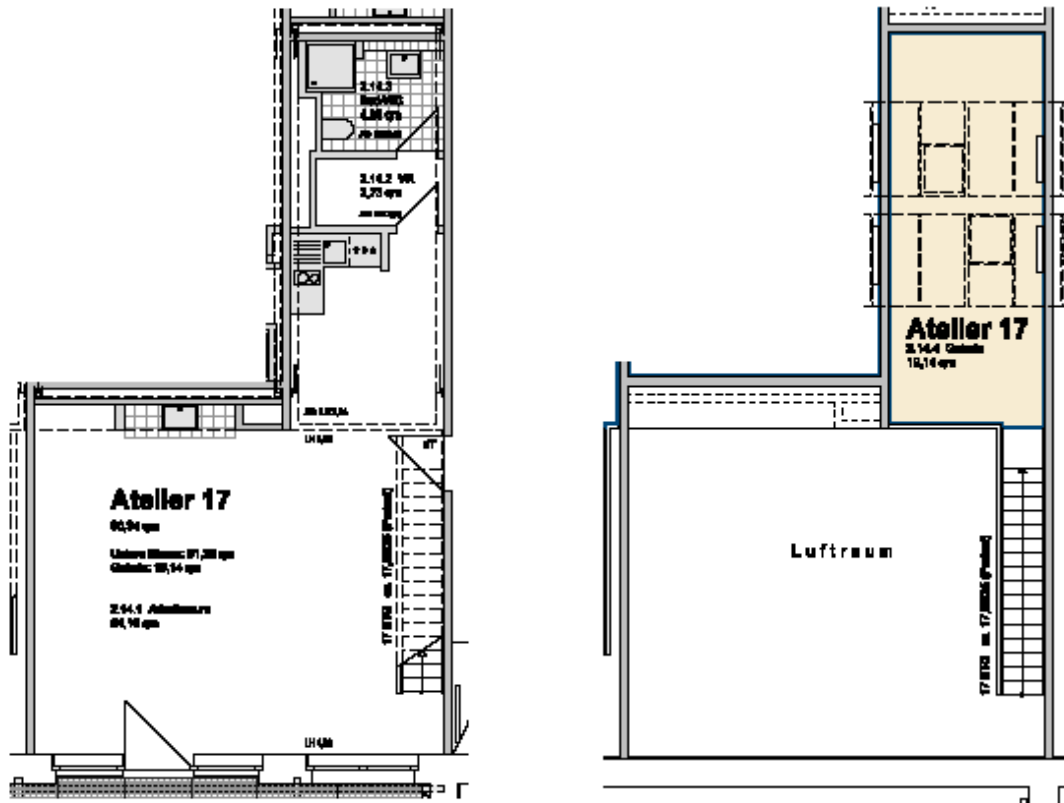
**studio 17:**

location:	first floor– see first floor plan in the addendum		
spatial concept:	according to the floor plan		
furnishing:	<ul style="list-style-type: none"> <li>- facade : entrance level: big upright metal windows</li> <li>ridge:     glass-skylight including ventilation flap and roller blinds</li> <li>- floors: entrance level:     cement floor coated light grey;</li> <li>gallery level:     wooden material worktop in its natural state, sealed.</li> <li>- walls, ceiling: painted white.</li> <li>- sanitary arrangements: bathroom with shower tray and hand washbasin; one-handle tap, tiled up to the height of the doors</li> <li>- heating system: floorheating entrance level; central heating with radiators on the gallery level</li> <li>- Pantry with sink and vanity unit and two hotplates</li> <li>- Worktop with a sink</li> <li>- electrical installation with divers possibilities of connections for light or supply of inhouse data lines</li> <li>- door opener with interphone</li> </ul> <p style="margin-left: 20px;">floor space lower level:           61,20 m<sup>2</sup> floor space gallery:                 19,14 m<sup>2</sup></p>		
floor space:		80,34	m <sup>2</sup>
rent net cold:	(6,30 € / m <sup>2</sup> )	506,14	€ / month
prepayment of additional costs:	(1,10 € / m <sup>2</sup> )	88,37	€ / month
prepayment of heating:	(0,80 € / m <sup>2</sup> )	64,27	€ / month
total rent:		658,78	€ / month

**Letting management:**

Kathrin Rüffer - GSE gGmbH – Gesellschaft für StadtEntwicklung- Prinzenallee 74, 13357 Berlin  
Phone +49 (30) 49 30 63 12 - E-Mail: [rueffer@gseggmbh.de](mailto:rueffer@gseggmbh.de) - <http://www.atelierhaus79.de>

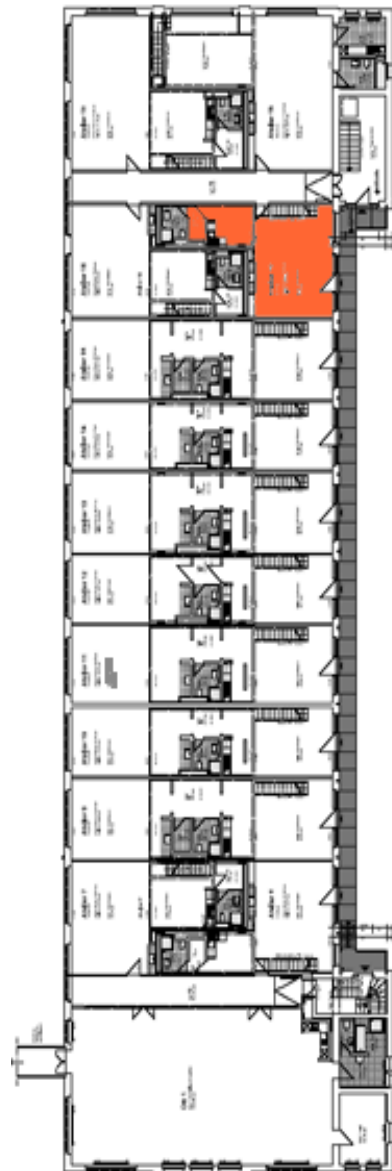
floor plan:



**Letting management:**

Kathrin Ruffer - GSE gGmbH – Gesellschaft für StadtEntwicklung- Prinzenallee 74, 13357 Berlin  
Phone +49 (30) 49 30 63 12 - E-Mail: [rueffer@gseggmbh.de](mailto:rueffer@gseggmbh.de) - <http://www.atelierhaus79.de>

floor plan: first floor with the position of the studio



**Letting management:**

Kathrin Rüffer - GSE gGmbH – Gesellschaft für StadtEntwicklung- Prinzenallee 74, 13357 Berlin  
Phone +49 (30) 49 30 63 12 - E-Mail: [rueffer@gseggmbh.de](mailto:rueffer@gseggmbh.de) - <http://www.atelierhaus79.de>