

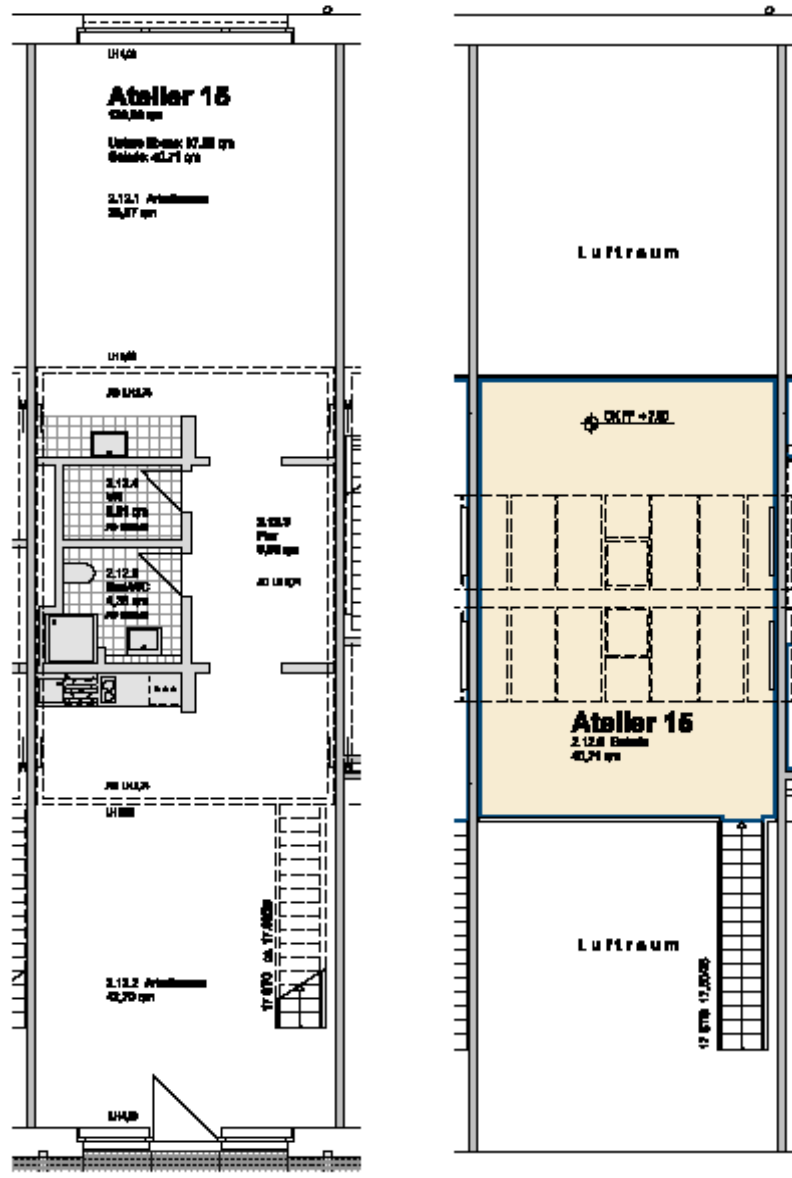
studio 15:

location:	first floor– see first floor plan in the addendum		
spatial concept:	according to the floor plan		
furnishing:	<ul style="list-style-type: none"> - facade : entrance level: big upright metal windows ridge: glass-skylight including ventilation flap and roller blinds - floors: entrance level: cement floor coated light grey; gallery level: wooden material worktop in its natural state, sealed. - walls, ceiling: painted white. - sanitary arrangements: bathroom with shower tray and hand washbasin; one-handle tap, tiled up to the height of the doors - heating system: floorheating entrance level; central heating with radiators on the gallery level - Pantry with sink and vanity unit and two hotplates - Worktop with a sink - electrical installation with divers possibilities of connections for light or supply of inhouse data lines - door opener with interphone <p>floor space lower level: 97,82 m² floor space gallery: 40,71 m²</p>		
floor space:		138,53	m ²
rent net cold:	(6,30 € / m ²)	872,74	€ / month
prepayment of additional costs:	(1,10 € / m ²)	152,38	€ / month
prepayment of heating:	(0,80 € / m ²)	110,82	€ / month
total rent:		1.135,94	€ / month

Letting management:

Kathrin Ruffer - GSE gGmbH – Gesellschaft für StadtEntwicklung- Prinzenallee 74, 13357 Berlin
Phone +49 (30) 49 30 63 12 - E-Mail: rueffer@gseggmbh.de - <http://www.atelierhaus79.de>

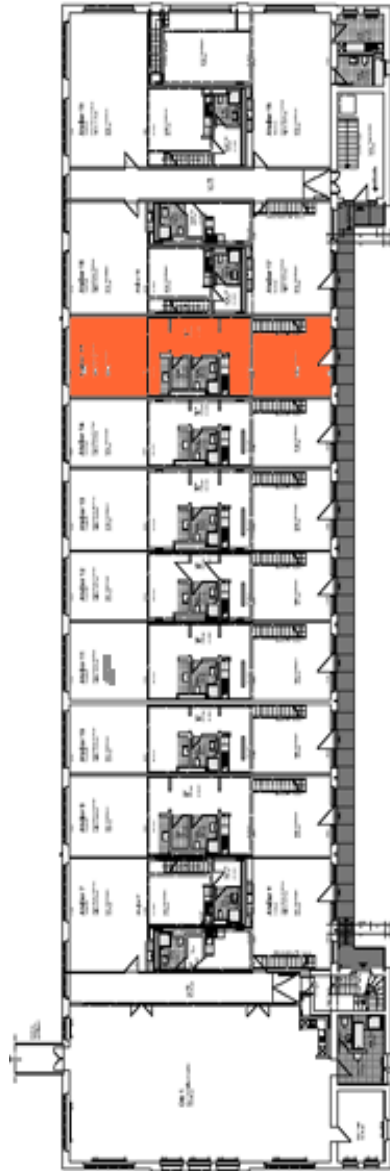
floor plan:



Letting management:

Kathrin Rüffer - GSE gGmbH – Gesellschaft für StadtEntwicklung- Prinzenallee 74, 13357 Berlin
Phone +49 (30) 49 30 63 12 - E-Mail: rueffer@gseggmbh.de - <http://www.atelierhaus79.de>

floor plan: first floor with the position of the studio



Letting management:

Kathrin Ruffer - GSE gGmbH – Gesellschaft für StadtEntwicklung- Prinzenallee 74, 13357 Berlin
Phone +49 (30) 49 30 63 12 - E-Mail: rueffer@gseggmbh.de - <http://www.atelierhaus79.de>