

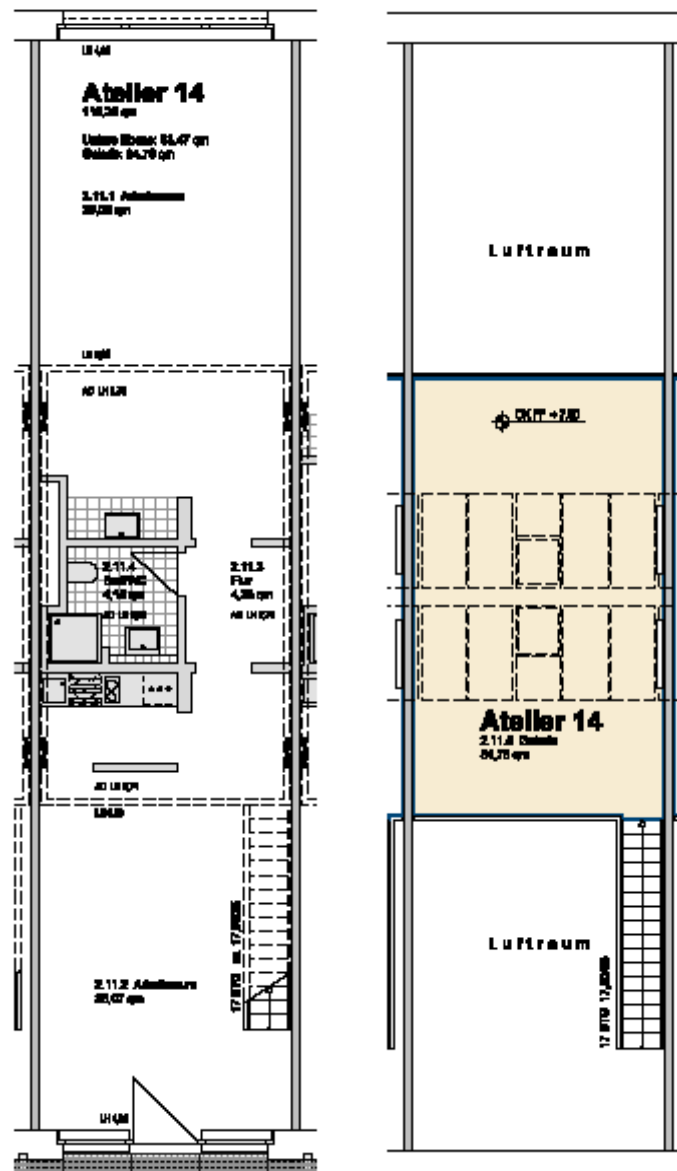
**studio 14:**

location:	first floor– see first floor plan in the addendum		
spatial concept:	according to the floor plan		
furnishing:	<ul style="list-style-type: none"> <li>- facade : entrance level: big upright metal windows ridge:     glass-skylight including ventilation flap and roller blinds</li> <li>- floors: entrance level:     cement floor coated light grey; gallery level:     wooden material worktop in its natural state, sealed.</li> <li>- walls, ceiling: painted white.</li> <li>- sanitary arrangements: bathroom with shower tray and hand washbasin; one-handle tap, tiled up to the height of the doors</li> <li>- heating system: floorheating entrance level; central heating with radiators on the gallery level</li> <li>- Pantry with sink and vanity unit and two hotplates</li> <li>- Worktop with a sink</li> <li>- electrical installation with divers possibilities of connections for light or supply of inhouse data lines</li> <li>- door opener with interphone</li> </ul> <p style="margin-left: 40px;">floor space lower level:                 83,47 m<sup>2</sup></p> <p style="margin-left: 40px;">floor space gallery:                         34,78 m<sup>2</sup></p>		
floor space:		118,25	m <sup>2</sup>
rent net cold:	(6,20 € / m <sup>2</sup> )	733,15	€ / month
prepayment of additional costs:	(1,40 € / m <sup>2</sup> )	165,55	€ / month
prepayment of heating:	(1,20 € / m <sup>2</sup> )	141,90	€ / month
total rent:		1.040,60	€ / month

**Letting management:**

Anke Schuster – GSE gGmbH - Wilhelminenhofstr. 83-85, Haus 79, Atelier 15 - 12459 Berlin  
 phone: 0163 - 899 45 33 - E-Mail: [schuster@gseggmbh.de](mailto:schuster@gseggmbh.de) - <http://www.atelierhaus79.de>

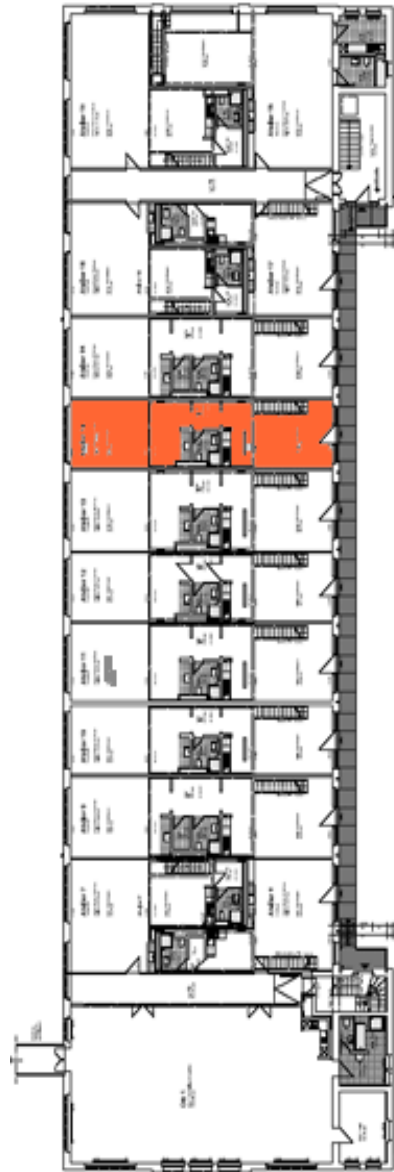
floor plan:



**Letting management:**

Anke Schuster – GSE gGmbH - Wilhelminenhofstr. 83-85, Haus 79, Atelier 15 - 12459 Berlin  
phone: 0163 - 899 45 33 - E-Mail: [schuster@gseggmbh.de](mailto:schuster@gseggmbh.de) - <http://www.atelierhaus79.de>

floor plan: first floor with the position of the studio



**Letting management:**

Anke Schuster – GSE gmbH - Wilhelminenhofstr. 83-85, Haus 79, Atelier 15 - 12459 Berlin  
phone: 0163 - 899 45 33 - E-Mail: [schuster@gseggmbh.de](mailto:schuster@gseggmbh.de) - <http://www.atelierhaus79.de>