

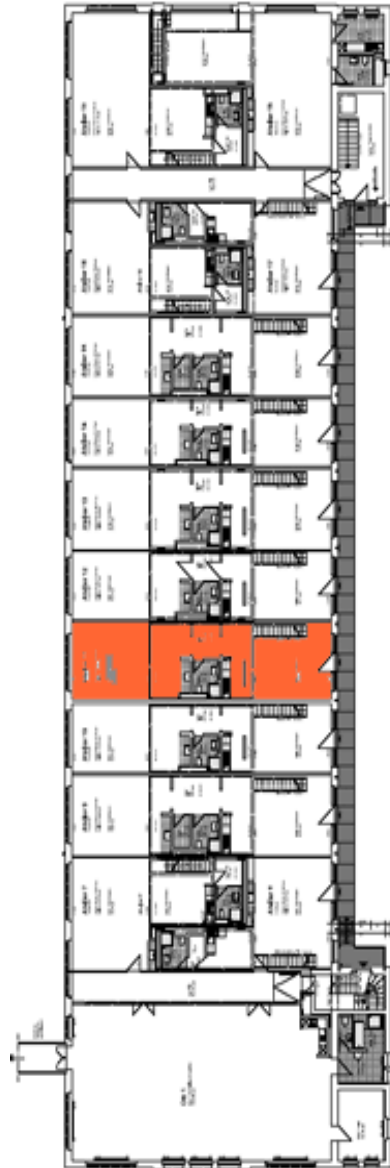
studio 11:

location:	first floor– see first floor plan in the addendum		
spatial concept:	according to the floor plan		
furnishing:	<ul style="list-style-type: none"> - facade : entrance level: big upright metal windows ridge: glass-skylight including ventilation flap and roller blinds - floors: entrance level: cement floor coated light grey; gallery level: wooden material worktop in its natural state, sealed. - walls, ceiling: painted white. - sanitary arrangements: bathroom with shower tray and hand washbasin; one-handle tap, tiled up to the height of the doors - heating system: floorheating entrance level; central heating with radiators on the gallery level - Pantry with sink and vanity unit and two hotplates - Worktop with a sink - electrical installation with divers possibilities of connections for light or supply of inhouse data lines - door opener with interphone <p style="margin-left: 20px;">floor space lower level: 95,42 m² floor space gallery: 39,47 m²</p>		
floor space:		134,89	m ²
rent net cold:	(7,20 € / m ²)	971,21	€ / month
prepayment of additional costs:		196,00	€ / month
prepayment of heating:		104,00	€ / month
total rent:		1.271,21	€ / month

Letting management:

Kathrin Ruffer - GSE gGmbH – Gesellschaft für StadtEntwicklung- Prinzenallee 74, 13357 Berlin
Phone +49 (30) 49 30 63 12 - E-Mail: rueffer@gseggmbh.de - <http://www.atelierhaus79.de>

floor plan: first floor with the position of the studio



Letting management:

Kathrin Rüffer - GSE gGmbH – Gesellschaft für StadtEntwicklung- Prinzenallee 74, 13357 Berlin
Phone +49 (30) 49 30 63 12 - E-Mail: rueffer@gseggmbh.de - <http://www.atelierhaus79.de>