

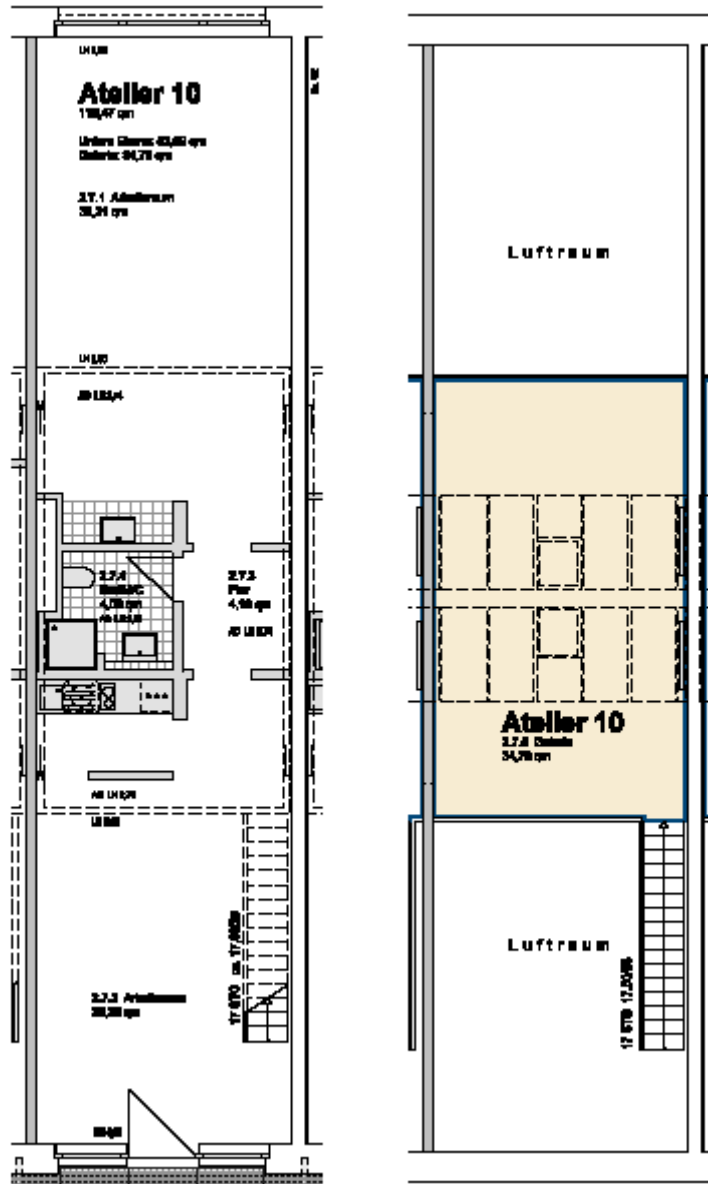
studio 10:

location:	first floor– see first floor plan in the addendum		
spatial concept:	according to the floor plan		
Ausstattung:	<ul style="list-style-type: none"> - facade : entrance level: big upright metal windows ridge: glass-skylight including ventilation flap and roller blinds - floors: entrance level: cement floor coated light grey; gallery level: wooden material worktop in its natural state, sealed. - walls, ceiling: painted white. - sanitary arrangements: bathroom with shower tray and hand washbasin; one-handle tap, tiled up to the height of the doors - heating system: floorheating entrance level; central heating with radiators on the gallery level - Pantry with sink and vanity unit and two hotplates - Worktop with a sink - electrical installation with divers possibilities of connections for light or supply of inhouse data lines - door opener with interphone <p style="margin-left: 40px;">Nutzfläche untere Ebene: 83,69 m²</p> <p style="margin-left: 40px;">Nutzfläche Galerie: 34,78 m²</p>		
Nutzfläche:		118,47	m ²
Nettokaltmiete :	(6,20 € / m ²)	734,51	€ / Monat
Betriebskostenvorauszahlung:	(1,40 € / m ²)	165,86	€ / Monat
Heizkostenvorauszahlung:	(1,20 € / m ²)	142,16	€ / Monat
Bruttowarmmiete:		1.042,53	€ / Monat

Vermietungsmanagement:

Anke Schuster – GSE gGmbH - Wilhelminenhofstr. 83-85, Haus 79, Atelier 15 - 12459 Berlin
 Telefon: 0163 - 899 45 33 - E-Mail: schuster@gseggmbh.de - <http://www.atelierhaus79.de>

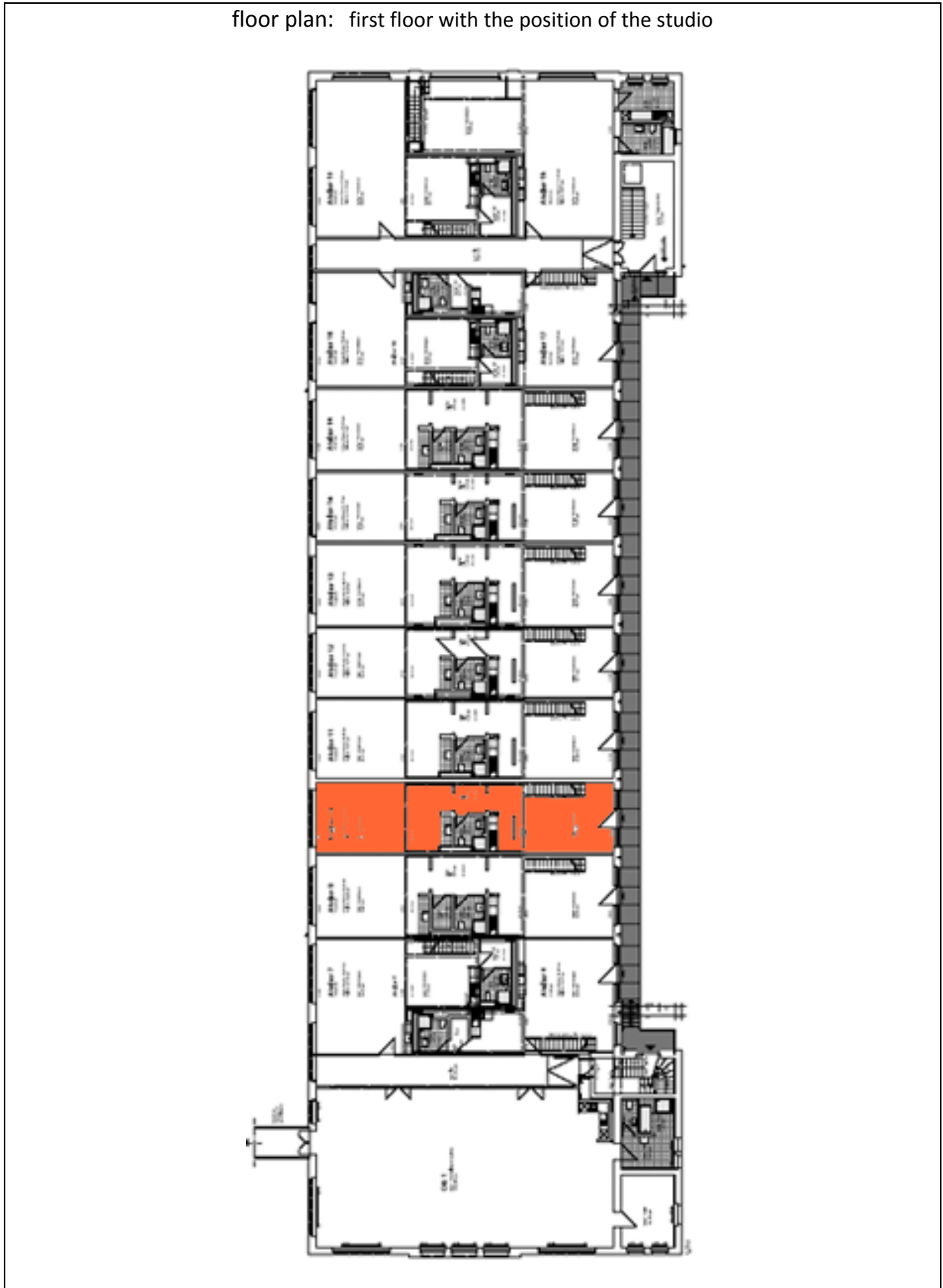
floor plan:



Vermietungsmanagement:

Anke Schuster – GSE gGmbH - Wilhelminenhofstr. 83-85, Haus 79, Atelier 15 - 12459 Berlin
Telefon: 0163 - 899 45 33 - E-Mail: schuster@gseggmbh.de - <http://www.atelierhaus79.de>

floor plan: first floor with the position of the studio



Vermietungsmanagement:

Anke Schuster – GSE gGmbH - Wilhelminenhofstr. 83-85, Haus 79, Atelier 15 - 12459 Berlin
Telefon: 0163 - 899 45 33 - E-Mail: schuster@gseggmbh.de - <http://www.atelierhaus79.de>