

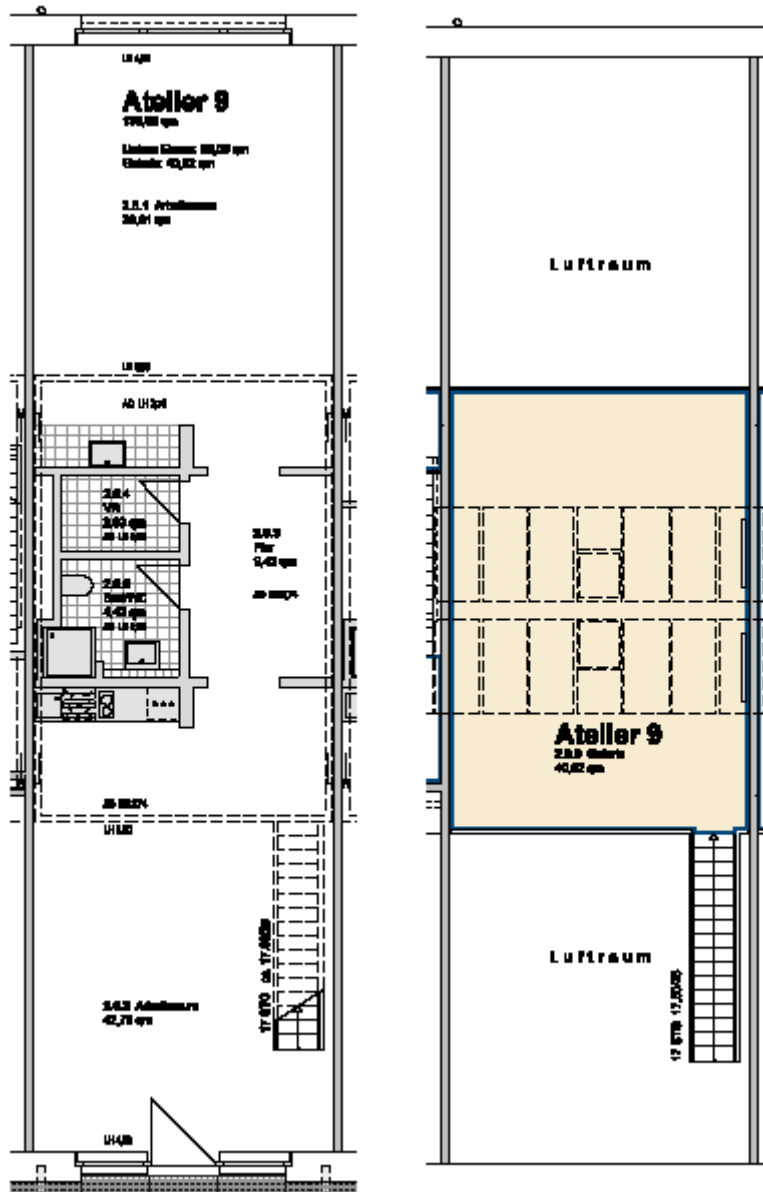
**studio 9:**

location:	first floor– see first floor plan in the addendum		
spatial concept:	according to the floor plan		
furnishing:	<ul style="list-style-type: none"> <li>- facade :                      entrance level: big upright metal windows                      ridge:                          glass-skylight including ventilation flap and roller blinds</li> <li>- floors:                      entrance level:                          cement floor coated light grey;                      gallery level:                          wooden material worktop in its natural state, sealed.</li> <li>- walls, ceiling: painted white.</li> <li>- sanitary arrangements: bathroom with shower tray and hand washbasin; one-handle tap, tiled up to the height of the doors</li> <li>- heating system: floorheating entrance level; central heating with radiators on the gallery level</li> <li>- Pantry with sink and vanity unit and two hotplates</li> <li>- Worktop with a sink</li> <li>- electrical installation with divers possibilities of connections for light or supply of inhouse data lines                      door opener with interphone</li> <li>floor space lower level:                      98,06 m<sup>2</sup>                      floor space gallery:                              40,82 m<sup>2</sup></li> </ul>		
floor space:		138,88	m <sup>2</sup>
rent net cold:	(7,20 € / m <sup>2</sup> )	994,94	€ / month
prepayment of additional costs:	(1,45 € / m <sup>2</sup> )	201,38	€ / month
prepayment of heating:		106,94	€ / month
total rent:		1.308,26	€ / month

**Lettig management:**

Kathrin Ruffer - GSE gGmbH – Gesellschaft für StadtEntwicklung - Prinzenallee 74, 13357 Berlin  
 Phone +49 (30) 318 7 318 - 12 - E-Mail: [rueffer@gseggmbh.de](mailto:rueffer@gseggmbh.de) - <http://www.atelierhaus79.de>

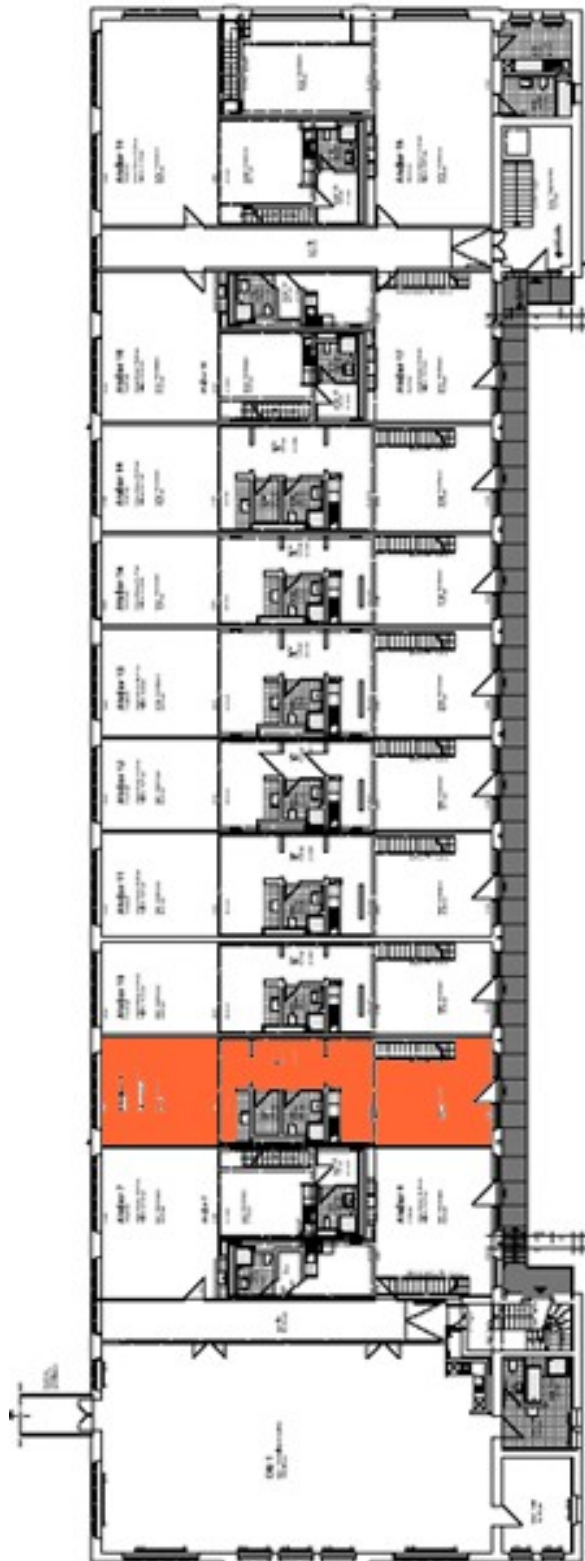
floor plan:



**Lettig management:**

Kathrin Ruffer - GSE gGmbH – Gesellschaft für StadtEntwicklung - Prinzenallee 74, 13357 Berlin  
Phone +49 (30) 318 7 318 - 12 - E-Mail: [rueffer@gseggmbh.de](mailto:rueffer@gseggmbh.de) - <http://www.atelierhaus79.de>

floor plan: first floor with the position of the studio



**Lettig management:**

Kathrin Ruffer - GSE gGmbH – Gesellschaft für StadtEntwicklung - Prinzenallee 74, 13357 Berlin  
Phone +49 (30) 318 7 318 - 12 - E-Mail: [rueffer@gseggmbh.de](mailto:rueffer@gseggmbh.de) - <http://www.atelierhaus79.de>