

**studio 6:**

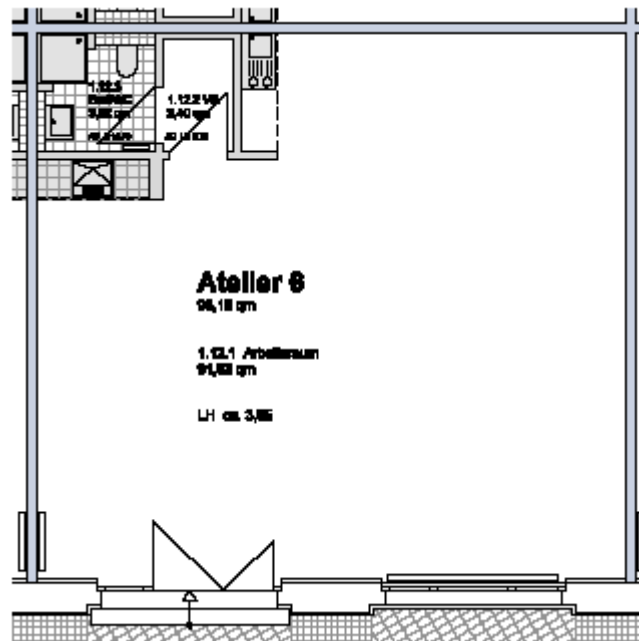
location:	Ground floor– see ground floor plan in the addendum		
spatial concept:	According to the floor plan		
furnishing:	<ul style="list-style-type: none"> <li>- facade : big upright metal windows</li> <li>- floors: cement floor coated light grey</li> <li>- walls, ceiling: painted white</li> <li>- sanitary arrangements: bathroom with shower tray and hand washbasin; one-handle tap, tiled up to the height of the doors</li> <li>- heating system: central heating with radiators</li> <li>- Pantry with sink and vanity unit</li> <li>- Worktop with a sink</li> <li>- electrical installation with divers possibilities of connections for light or supply of inhouse data lines</li> </ul>		
floor space:		98,15	m <sup>2</sup>
rent net cold:	(4,30 € / m <sup>2</sup> )	422,05	€ / month
prepayment of additional costs:	(1,10 € / m <sup>2</sup> )	107,97	€ / month
prepayment of heating:	(0,80 € / m <sup>2</sup> )	78,52	€ / month
total rent:		608,54	€ / month

**Vermietungsmanagement:**

Anke Schuster – GSE gGmbH - Wilhelminenhofstr. 83-85, Haus 79, Atelier 15 - 12459 Berlin  
 Telefon: 0163 - 899 45 33 - E-Mail: [schuster@gseggmbh.de](mailto:schuster@gseggmbh.de) - <http://www.atelierhaus79.de>

floor plan:

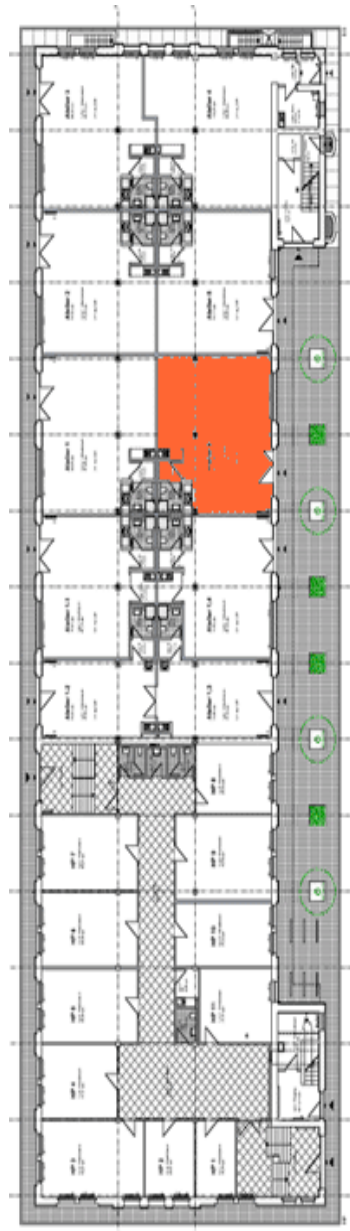
:



**Vermietungsmanagement:**

Anke Schuster – GSE gGmbH - Wilhelminenhofstr. 83-85, Haus 79, Atelier 15 - 12459 Berlin  
Telefon: 0163 - 899 45 33 - E-Mail: [schuster@gseggmbh.de](mailto:schuster@gseggmbh.de) - <http://www.atelierhaus79.de>

floor plan: first floor with the position of the studio



**Vermietungsmanagement:**

Anke Schuster – GSE gGmbH - Wilhelminenhofstr. 83-85, Haus 79, Atelier 15 - 12459 Berlin  
Telefon: 0163 - 899 45 33 - E-Mail: [schuster@gseggmbh.de](mailto:schuster@gseggmbh.de) - <http://www.atelierhaus79.de>