

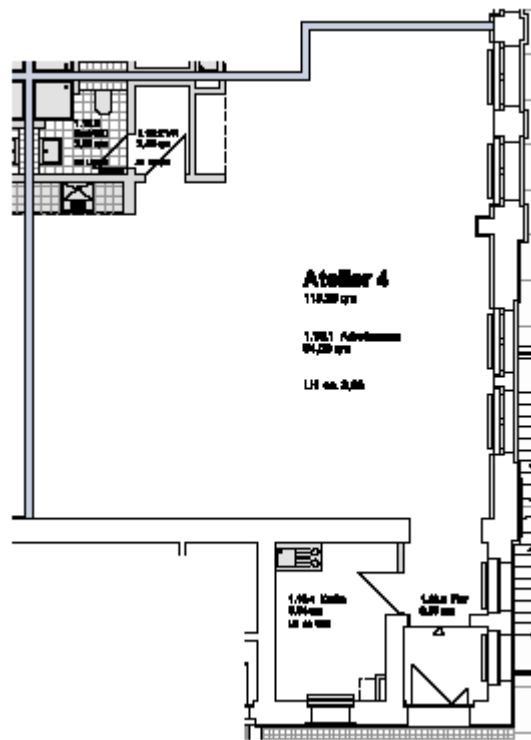
Studio 4:

location:	Ground floor– see ground floor plan in the addendum		
spatial concept:	According to the floor plan		
furnishing:	<ul style="list-style-type: none"> - facade : big upright metal windows - floors: cement floor coated light grey - walls, ceiling: painted white - sanitary arrangements: bathroom with shower tray and hand washbasin; one-handle tap, tiled up to the height of the doors - heating system: central heating with radiators - Pantry with sink and vanity unit - Worktop with a sink - electrical installation with divers possibilities of connections for light or supply of inhouse data lines 		
floor space:		115,28	m ²
rent net cold:	(5,90 € / m ²)	680,15	€ / month
prepayment of additional costs:	(1,10 € / m ²)	126,81	€ / month
prepayment of heating:	(0,80 € / m ²)	92,22	€ / month
total rent:		899,18	€ / month

Letting management:

Kathrin Ruffer - GSE gGmbH – Gesellschaft für StadtEntwicklung- Prinzenallee 74, 13357 Berlin
 Phone +49 (30) 49 30 63 12 - E-Mail: rueffer@gseggmbh.de - <http://www.atelierhaus79.de>

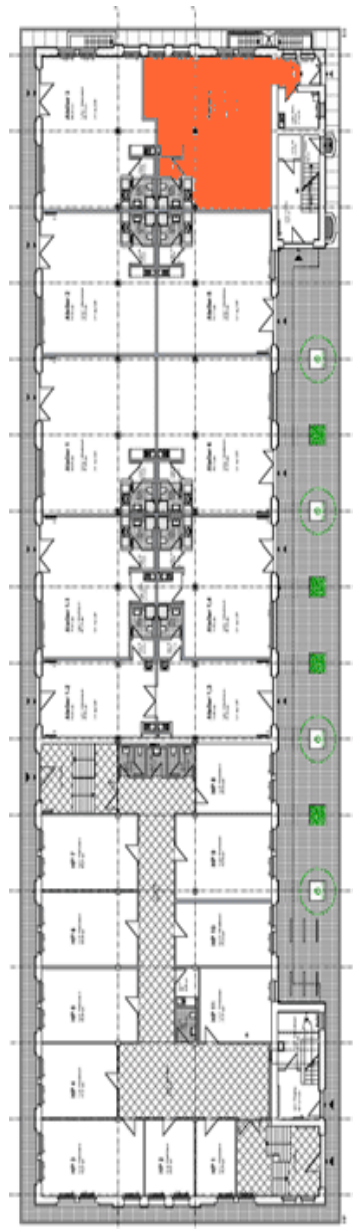
floor plan:



Letting management:

Kathrin Rüffer - GSE gGmbH – Gesellschaft für StadtEntwicklung- Prinzenallee 74, 13357 Berlin
Phone +49 (30) 49 30 63 12 - E-Mail: rueffer@gseggmbh.de - <http://www.atelierhaus79.de>

floor plan: first floor with the position of the studio



Letting management:

Kathrin Rüffer - GSE gGmbH – Gesellschaft für StadtEntwicklung- Prinzenallee 74, 13357 Berlin
Phone +49 (30) 49 30 63 12 - E-Mail: rueffer@gseggmbh.de - <http://www.atelierhaus79.de>