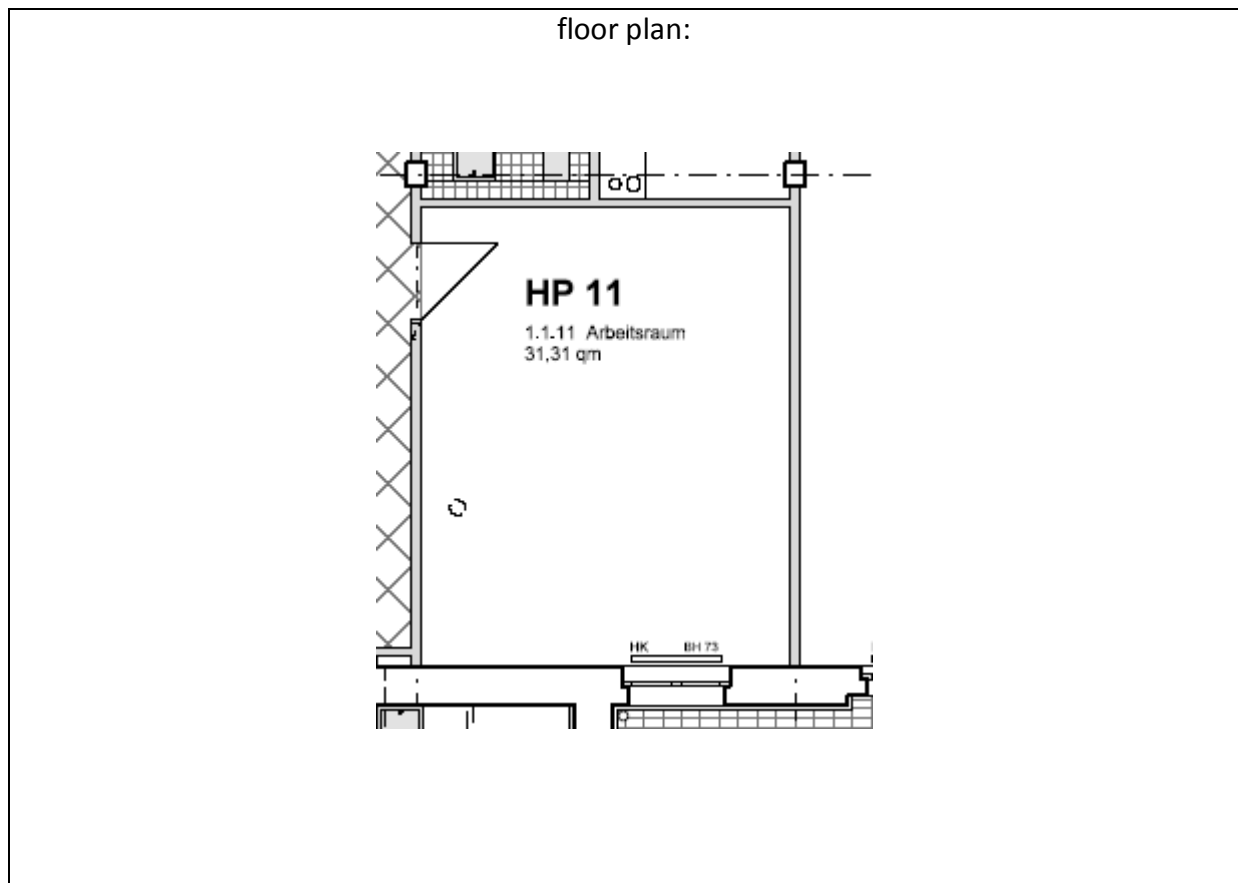


Studio 1.1.11:

location:	Ground floor– see ground floor plan in the addendum		
spatial concept:	According to the floor plan Single room with shared WC and pantry		
furnishing:	<ul style="list-style-type: none"> - height: 2,7 m - facade : big upright metal windows, space: ca. 2,5 m² - floors: cement floor coated light grey - walls, ceiling: painted white - sanitary arrangements: shared facilities - heating system: central heating with radiators - no water facility inside the studios, worktop with a sink in a shared room - electrical installation 		
floor space:		29,32	m ²
rent net cold:	(4,50 € / m ²)	131,94	€ / month
prepayment of additional costs:	(1,10 € / m ²)	32,25	€ / month
prepayment of heating:	(0,80 € / m ²)	23,46	€ / month
total rent:		187,65	€ / month

Letting management:

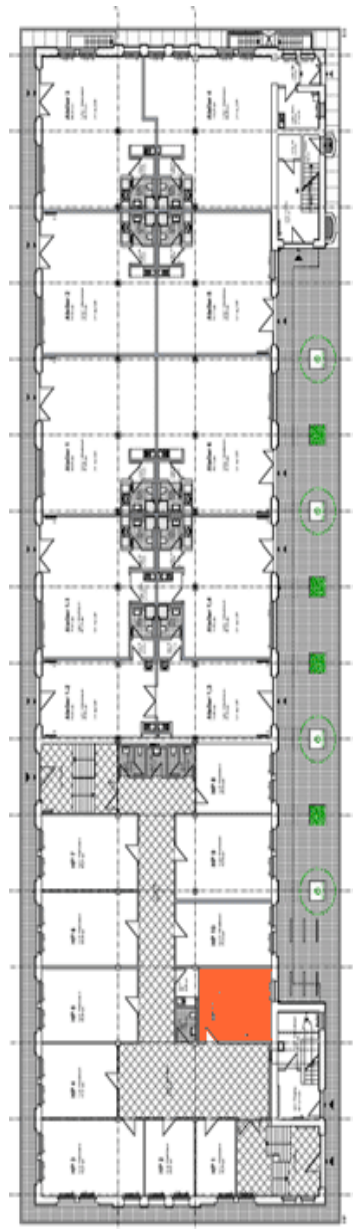
Kathrin Rüffer - GSE gGmbH – Gesellschaft für StadtEntwicklung- Prinzenallee 74, 13357 Berlin
Phone +49 (30) 49 30 63 12 - E-Mail: rueffer@gseggmbh.de - <http://www.atelierhaus79.de>



Letting management:

Kathrin Rüffer - GSE gGmbH – Gesellschaft für StadtEntwicklung- Prinzenallee 74, 13357 Berlin
Phone +49 (30) 49 30 63 12 - E-Mail: rueffer@gseggmbh.de - <http://www.atelierhaus79.de>

floor plan: ground floor with the position of the studio



Letting management:

Kathrin Rüffer - GSE gGmbH – Gesellschaft für StadtEntwicklung- Prinzenallee 74, 13357 Berlin
Phone +49 (30) 49 30 63 12 - E-Mail: rueffer@gseggmbh.de - <http://www.atelierhaus79.de>