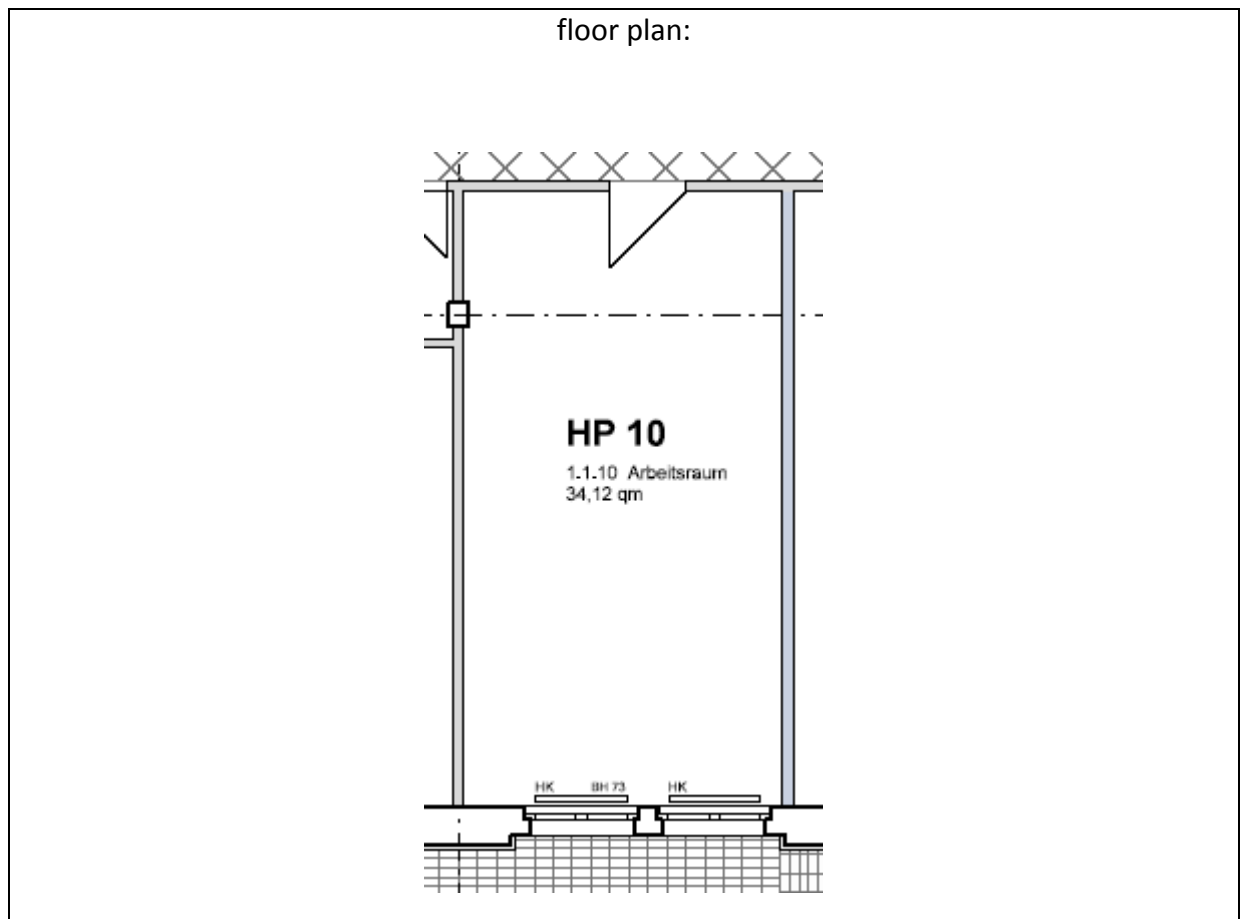


**Studio 1.1.10:**

location:	Ground floor– see ground floor plan in the addendum		
spatial concept:	According to the floor plan Single room with shared WC and pantry		
furnishing:	<ul style="list-style-type: none"> <li>- height: 2,7 m</li> <li>- facade : big upright metal windows, space: ca. 2,5 m<sup>2</sup></li> <li>- floors: cement floor coated light grey</li> <li>- walls, ceiling: painted white</li> <li>- sanitary arrangements: shared facilities</li> <li>- heating system: central heating with radiators</li> <li>- no water facility inside the studios, worktop with a sink in a shared room</li> <li>- electrical installation</li> </ul>		
floor space:		33,98	m <sup>2</sup>
rent net cold:	(3,70 € / m <sup>2</sup> )	125,73	€ / month
prepayment of additional costs:	(1,10 € / m <sup>2</sup> )	37,38	€ / month
prepayment of heating:	(0,80 € / m <sup>2</sup> )	27,18	€ / month
total rent:		190,29	€ / month

**Vermietungsmanagement:**

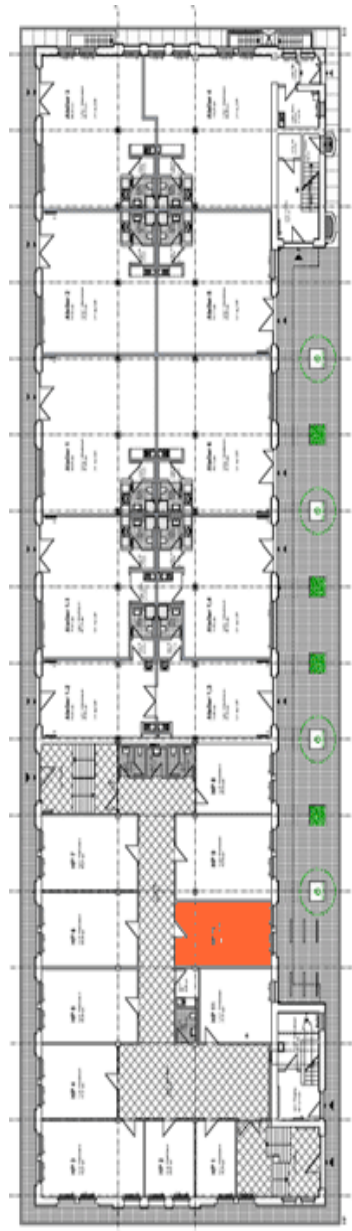
Anke Schuster – GSE gGmbH - Wilhelminenhofstr. 83-85, Haus 79, Atelier 15 - 12459 Berlin  
 Telefon: 0163 - 899 45 33 - E-Mail: [schuster@gseggmbh.de](mailto:schuster@gseggmbh.de) - <http://www.atelierhaus79.de>



**Vermietungsmanagement:**

Anke Schuster – GSE gGmbH - Wilhelminenhofstr. 83-85, Haus 79, Atelier 15 - 12459 Berlin  
Telefon: 0163 - 899 45 33 - E-Mail: [schuster@gseggmbh.de](mailto:schuster@gseggmbh.de) - <http://www.atelierhaus79.de>

floor plan: ground floor with the position of the studio



**Vermietungsmanagement:**

Anke Schuster – GSE gGmbH - Wilhelminenhofstr. 83-85, Haus 79, Atelier 15 - 12459 Berlin  
Telefon: 0163 - 899 45 33 - E-Mail: [schuster@gseggmbh.de](mailto:schuster@gseggmbh.de) - <http://www.atelierhaus79.de>