

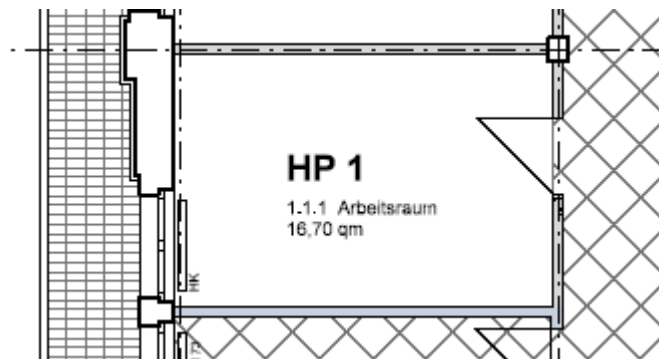
Studio 1.1.1:

location:	Ground floor– see ground floor plan in the addendum		
spatial concept:	According to the floor plan Single room with shared WC and pantry		
furnishing:	<ul style="list-style-type: none"> - height: 2,7 m - facade : big upright metal windows, space: ca. 2,5 m² - floors: cement floor coated light grey - walls, ceiling: painted white - sanitary arrangements: shared facilities - heating system: central heating with radiators - no water facility inside the studios, worktop with a sink in a shared room - electrical installation 		
floor space:		16,51	m ²
rent net cold:	(3,70 € / m ²)	61,08	€ / month
prepayment of additional costs:	(1,40 € / m ²)	23,11	€ / month
prepayment of heating:	(1,20 € / m ²)	19,81	€ / month
total rent:		103,00	€ / month

Vermietungsmanagement:

Anke Schuster – GSE gGmbH - Wilhelminenhofstr. 83-85, Haus 79, Atelier 15 - 12459 Berlin
 Telefon: 0163 - 899 45 33 - E-Mail: schuster@gseggmbh.de - <http://www.atelierhaus79.de>

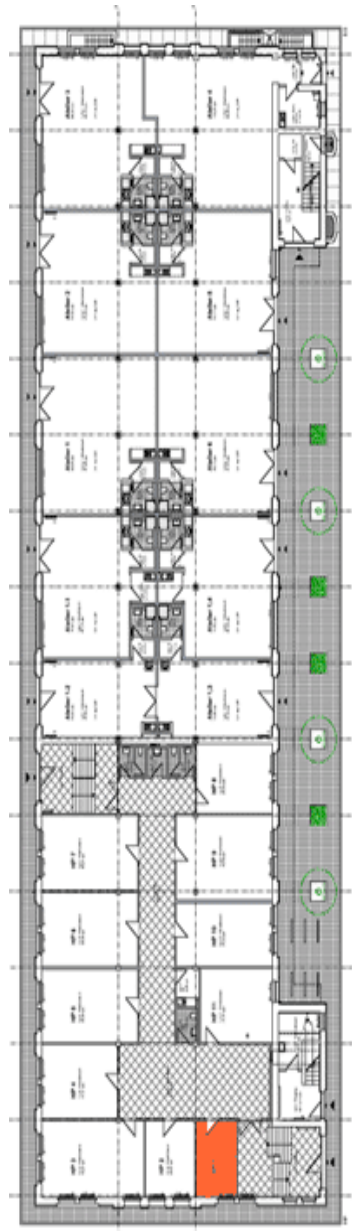
floor plan:



Vermietungsmanagement:

Anke Schuster – GSE gGmbH - Wilhelminenhofstr. 83-85, Haus 79, Atelier 15 - 12459 Berlin
Telefon: 0163 - 899 45 33 - E-Mail: schuster@gseggmbh.de - <http://www.atelierhaus79.de>

floor plan: ground floor with the position of the studio



Vermietungsmanagement:

Anke Schuster – GSE gGmbH - Wilhelminenhofstr. 83-85, Haus 79, Atelier 15 - 12459 Berlin
Telefon: 0163 - 899 45 33 - E-Mail: schuster@gseggmbh.de - <http://www.atelierhaus79.de>