

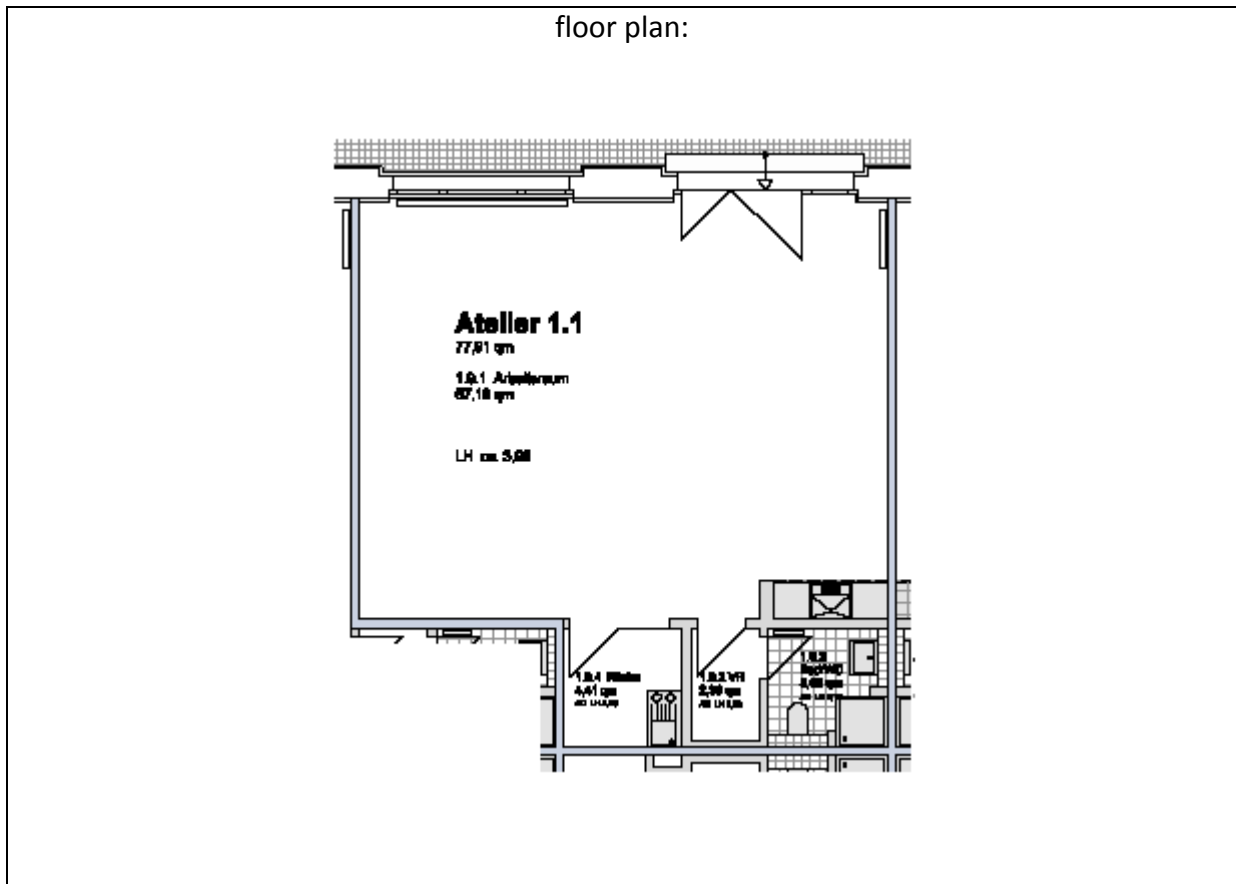
studio 1.1:

location:	Ground floor– see ground floor plan in the addendum		
spatial concept:	According to the floor plan		
furnishing:	<ul style="list-style-type: none"> - facade : big upright metal windows - floors: cement floor coated light grey - walls, ceiling: painted white - sanitary arrangements: bathroom with shower tray and hand washbasin; one-handle tap, tiled up to the height of the doors - heating system: central heating with radiators - Pantry with sink and vanity unit - Worktop with a sink - electrical installation with divers possibilities of connections for light or supply of inhouse data lines 		
floor space:		77,91	m ²
rent net cold:	(4,20 € / m ²)	327,22	€ / month
prepayment of additional costs:	(1,40 € / m ²)	109,07	€ / month
prepayment of heating:	(1,20 € / m ²)	93,49	€ / month
total rent:		529,78	€ / month

Vermietungsmanagement:

Anke Schuster – GSE gGmbH - Wilhelminenhofstr. 83-85, Haus 79, Atelier 15 - 12459 Berlin
 Telefon: 0163 - 899 45 33 - E-Mail: schuster@gseggmbh.de - <http://www.atelierhaus79.de>

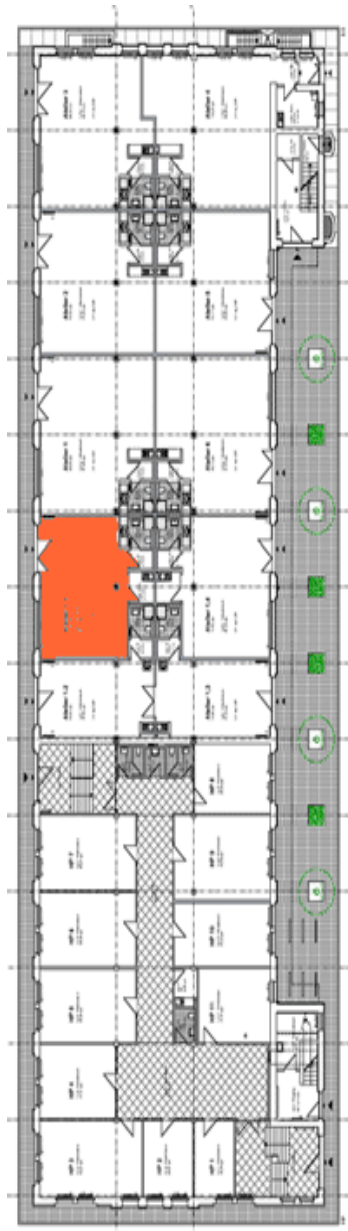
floor plan:



Vermietungsmanagement:

Anke Schuster – GSE gGmbH - Wilhelminenhofstr. 83-85, Haus 79, Atelier 15 - 12459 Berlin
Telefon: 0163 - 899 45 33 - E-Mail: schuster@gseggmbh.de - <http://www.atelierhaus79.de>

floor plan: first floor with the position of the studio



Vermietungsmanagement:

Anke Schuster – GSE gGmbH - Wilhelminenhofstr. 83-85, Haus 79, Atelier 15 - 12459 Berlin
Telefon: 0163 - 899 45 33 - E-Mail: schuster@gseggmbh.de - <http://www.atelierhaus79.de>